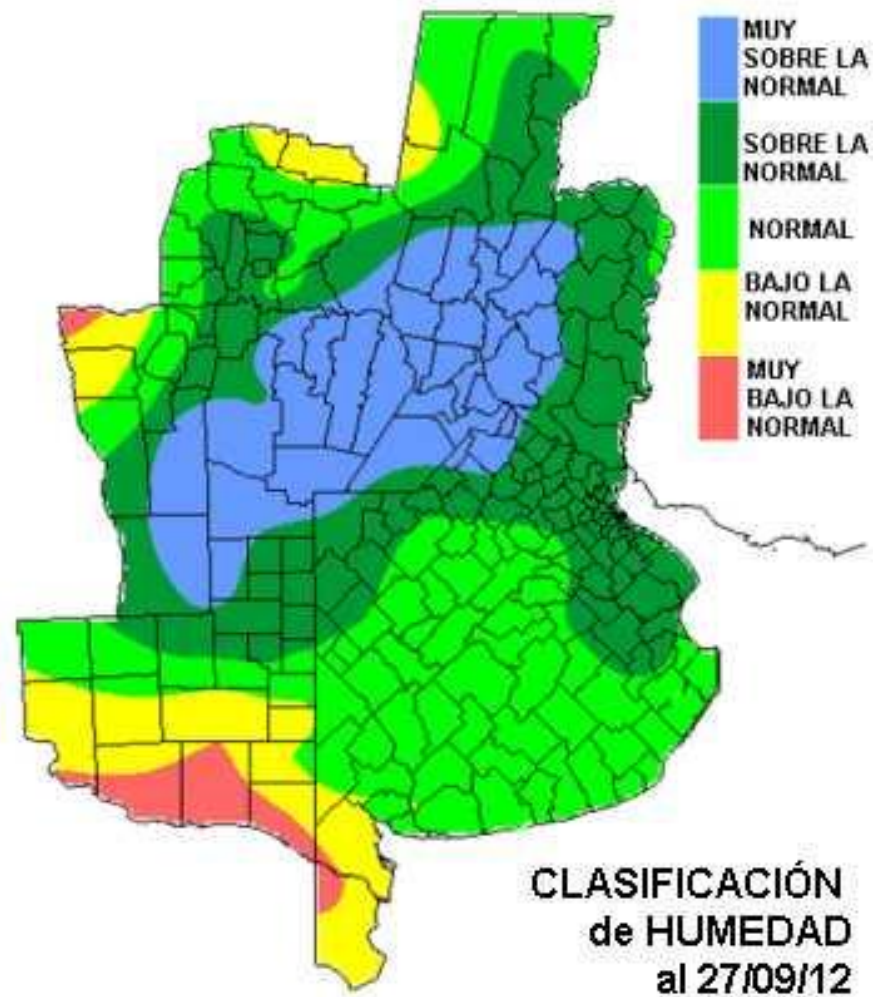
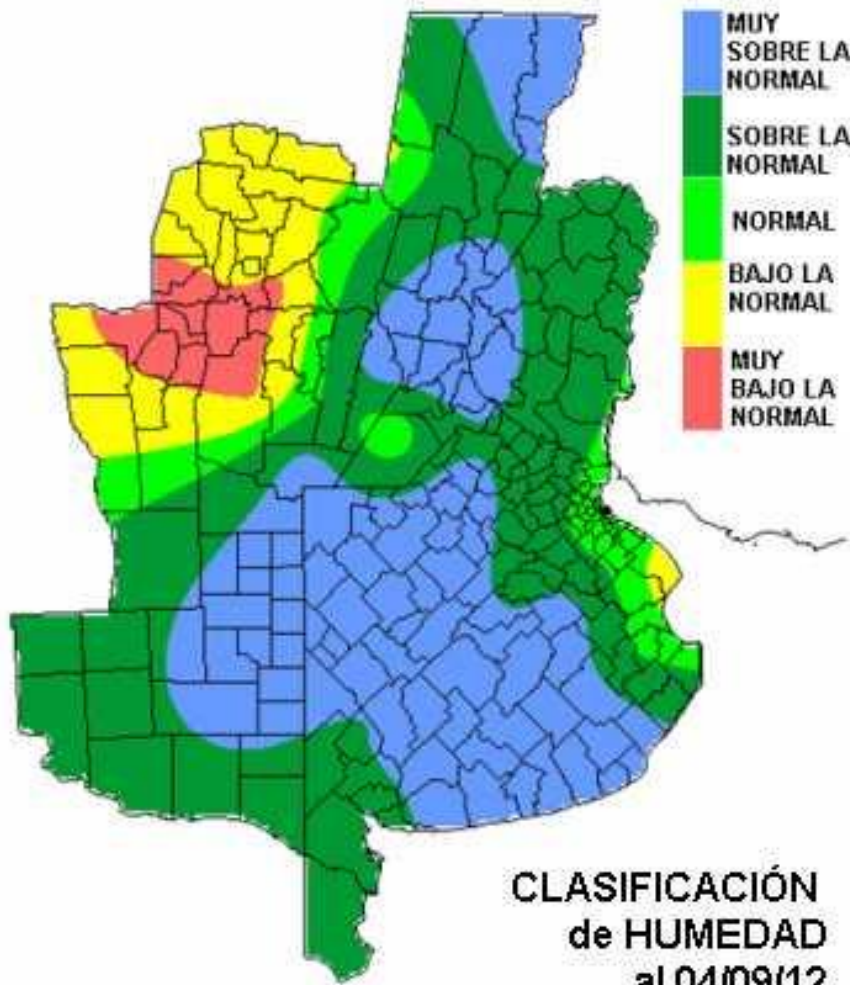
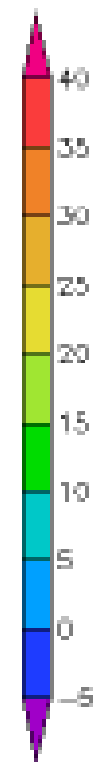
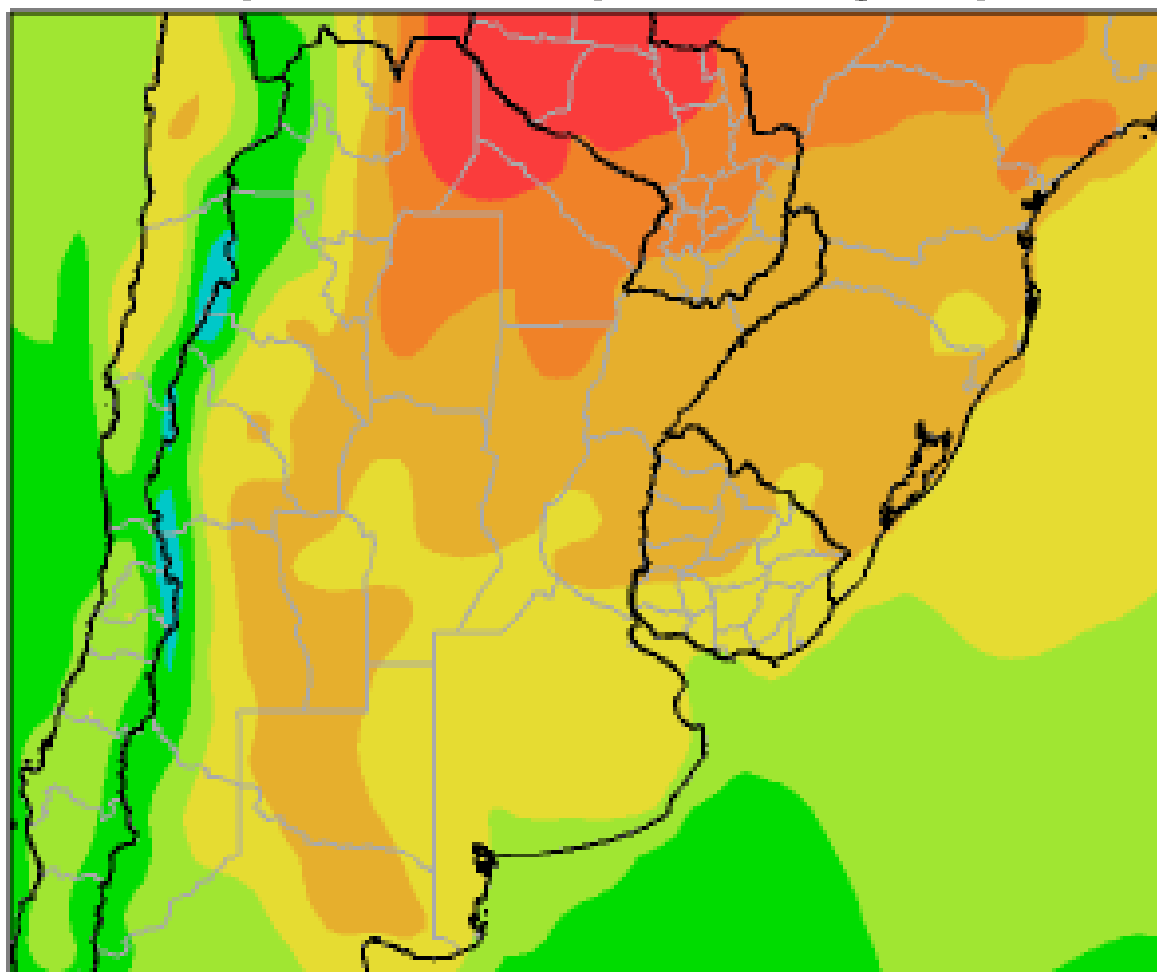


**PERSPECTICAS CLIMATICAS
ARGENTINA y BRASIL
A OCTUBRE 10**

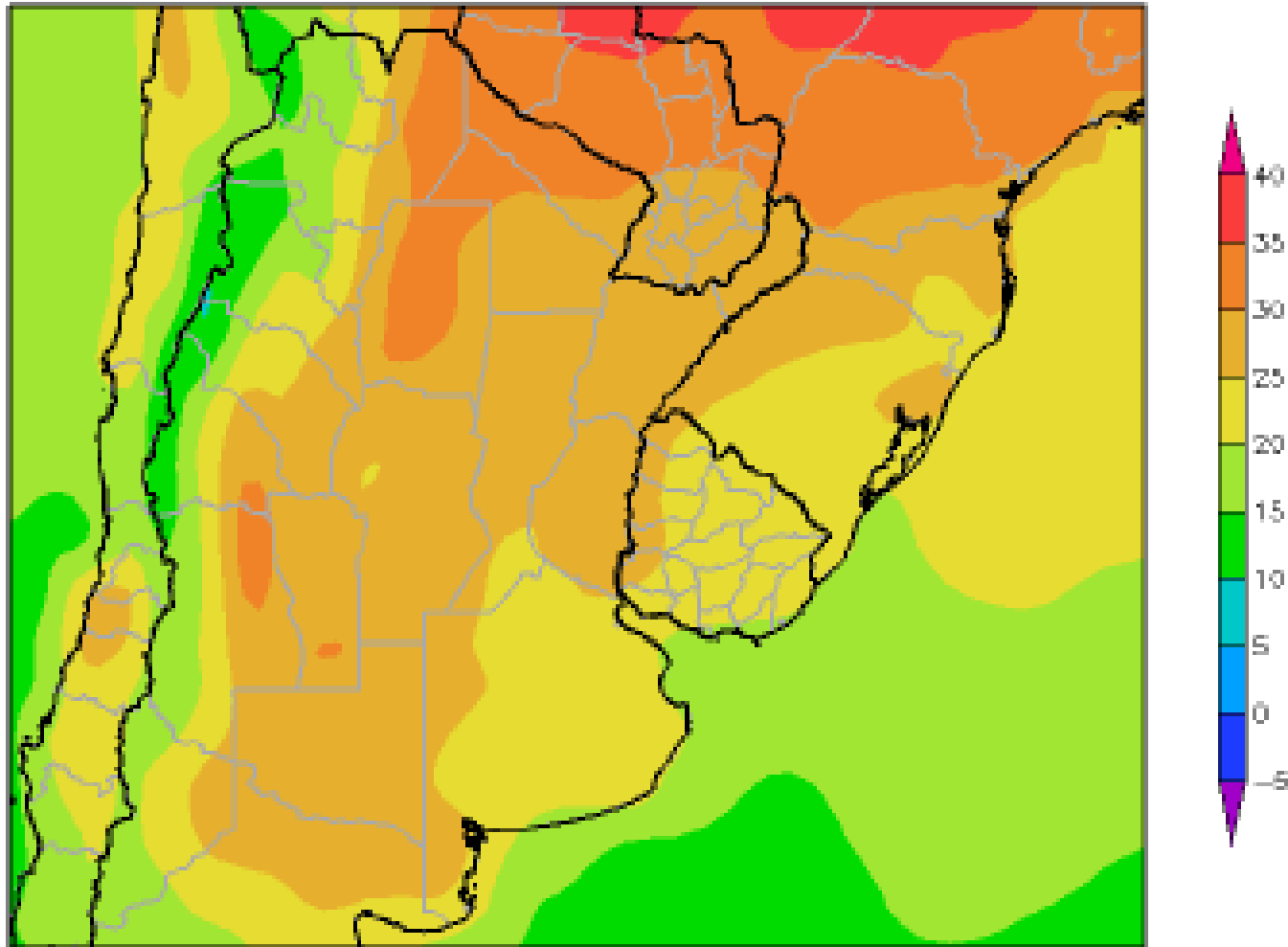




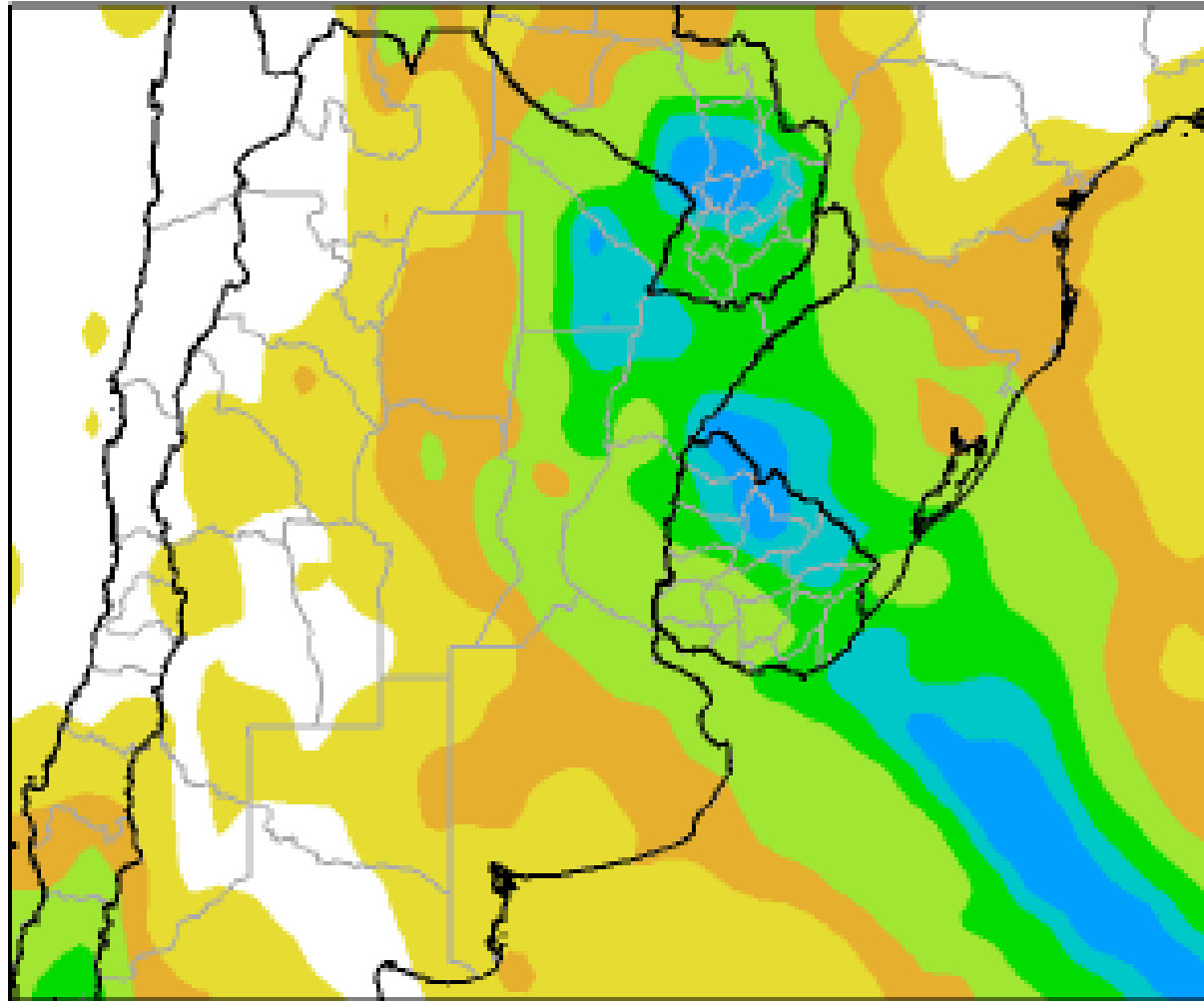
Perspectiva Climática del 27/09 al 03/10 de 2012
Temperatura Máxima (Grados Centígrados)



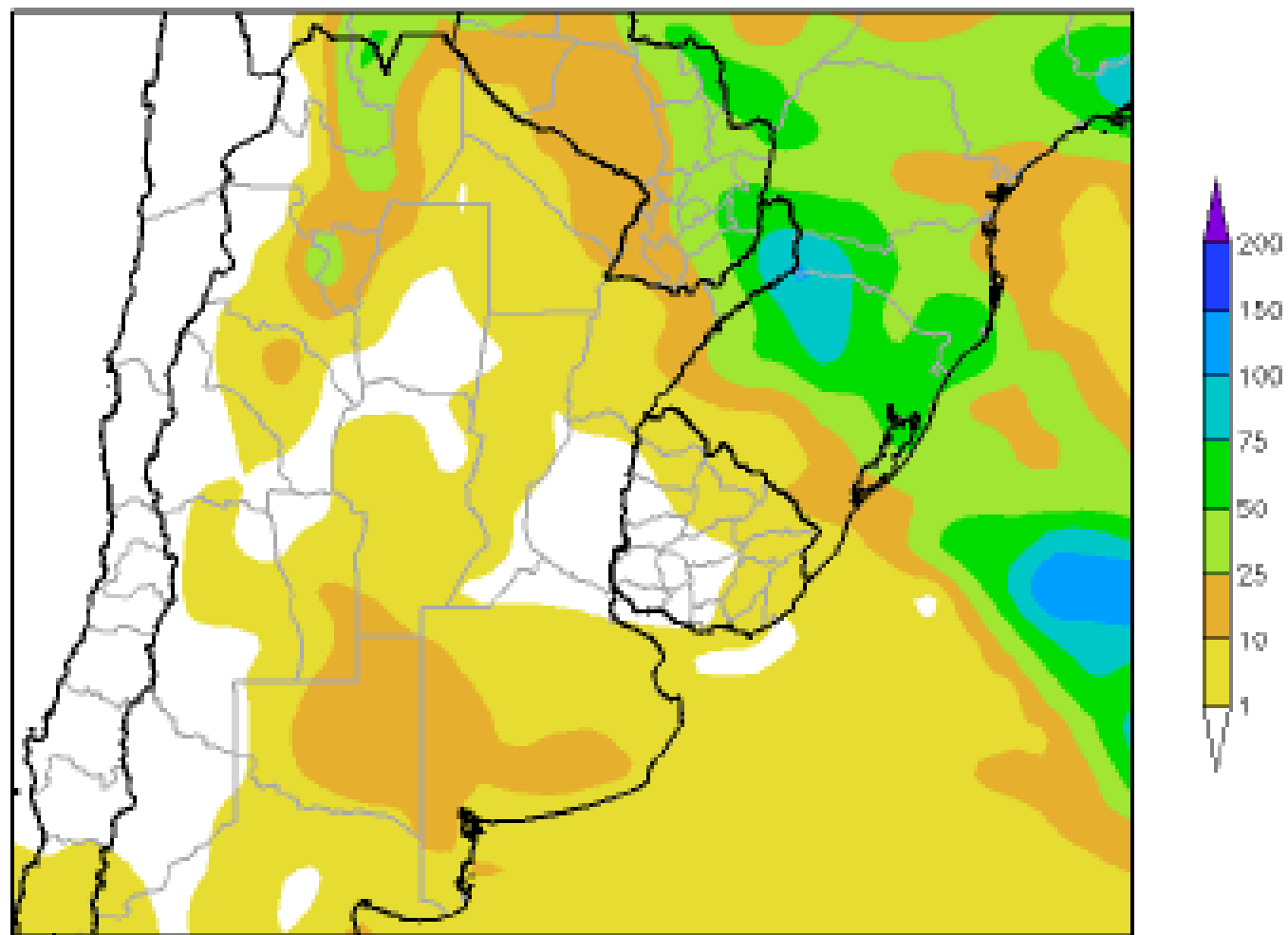
Perspectiva Climática del 4 al 10 de Octubre de 2012
Temperatura Máxima (Grados Centígrados)



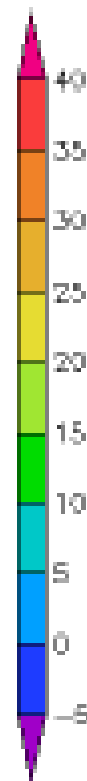
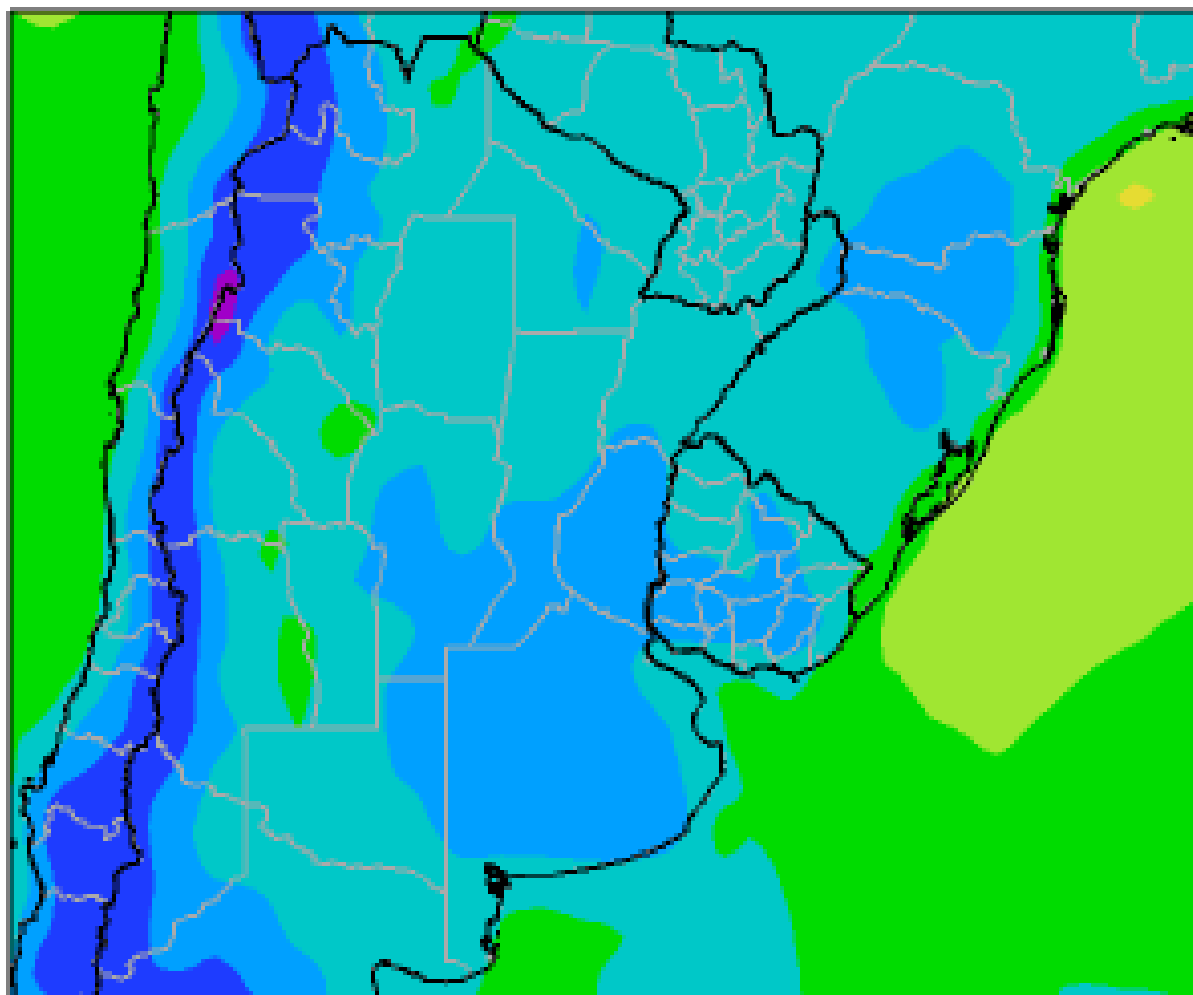
Perspectiva Climática del 27/09 al 03/10 de 2012
Precipitación Acumulada (mm)



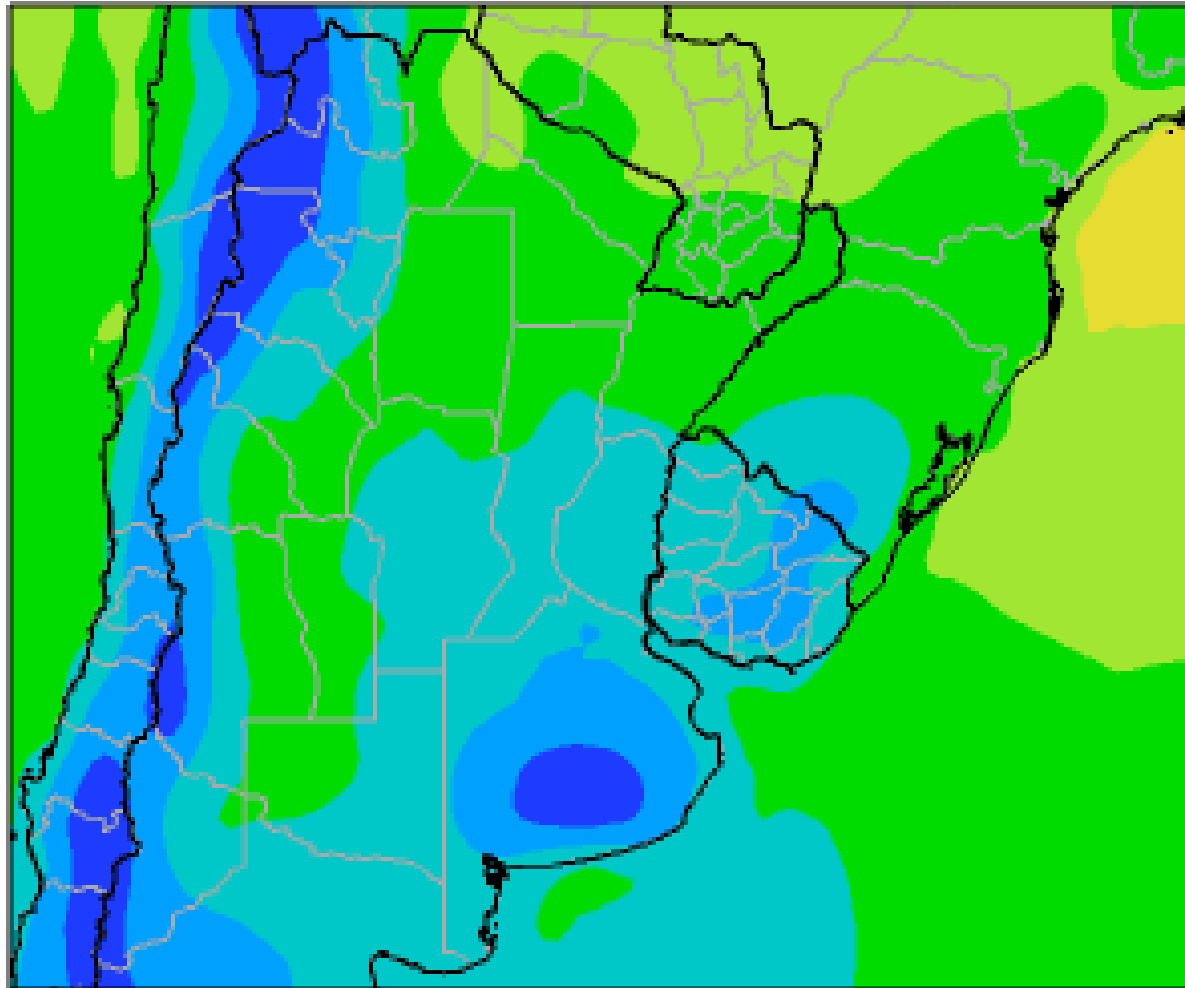
Perspectiva Climática del 4 al 10 de Octubre de 2012
Precipitación Acumulada (mm)



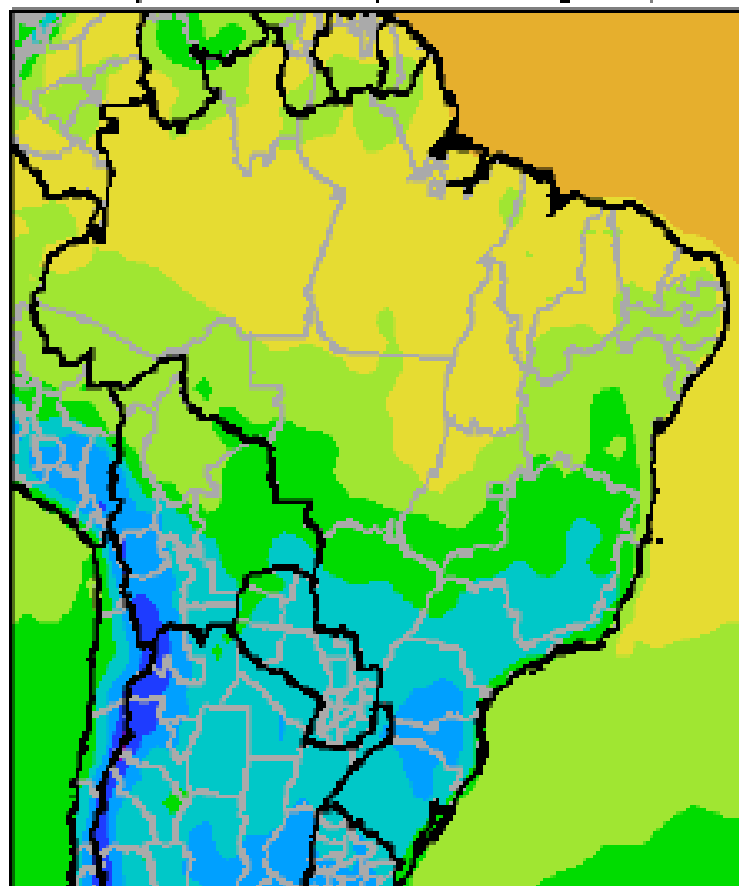
Perspectiva Climática del 27/09 al 03/10 de 2012
Temperatura Mínima (Grados Centígrados)



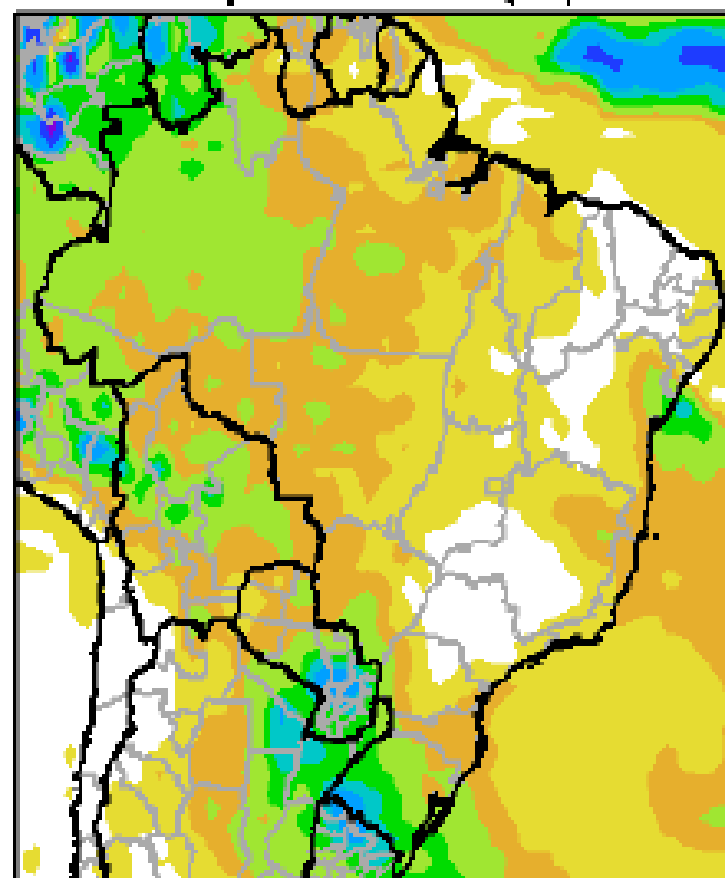
Perspectiva Climática del 4 al 10 de Octubre de 2012
Temperatura Mínima (Grados Centígrados)



Perspectiva Climática del 27/09 al 03/10 de 2012
Temperatura Mínima (Grados Centígrados)

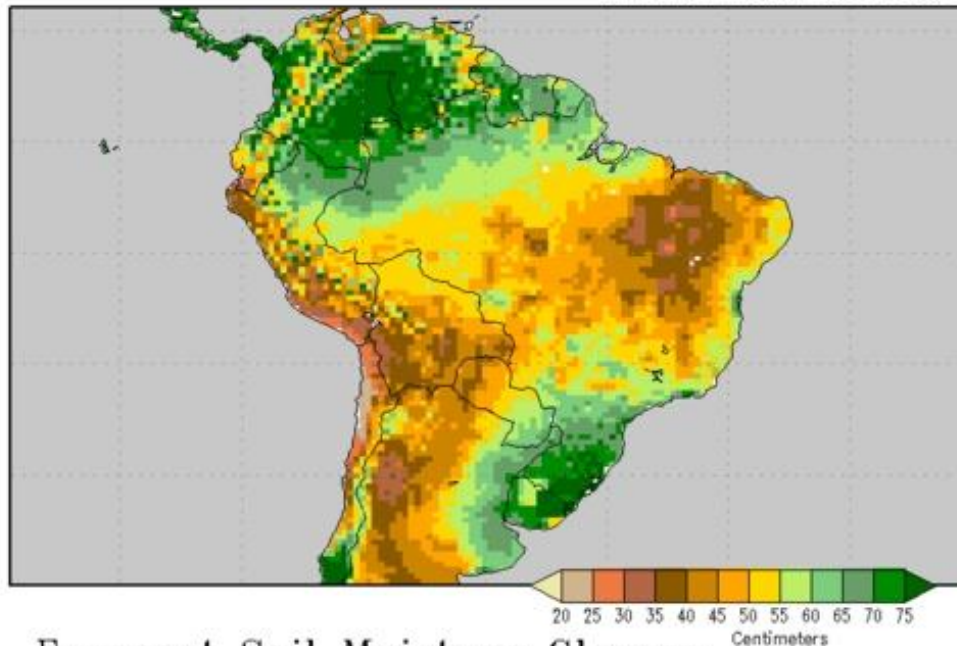


Perspectiva Climática del 27/09 al 03/10 de 2012
Precipitación Acumulada (mm)



Initial Soil Moisture

Liquid Water in top 2 meters of soil
Valid time: Fri, 28 SEP 2012 at 00Z

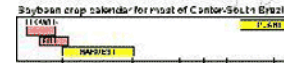
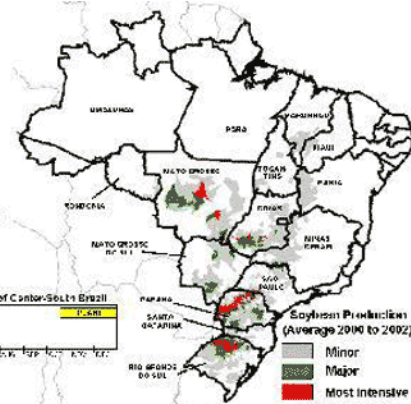


State-Level Production
(as % of total)

Mato Grosso	27
Paraná	22
Rio Grande do Sul	15
Goiás	12
Mato Grosso do Sul	8
Bahia	4
Minas Gerais	4
São Paulo	4
Santa Catarina	1
Maranhão	1
Other States	1

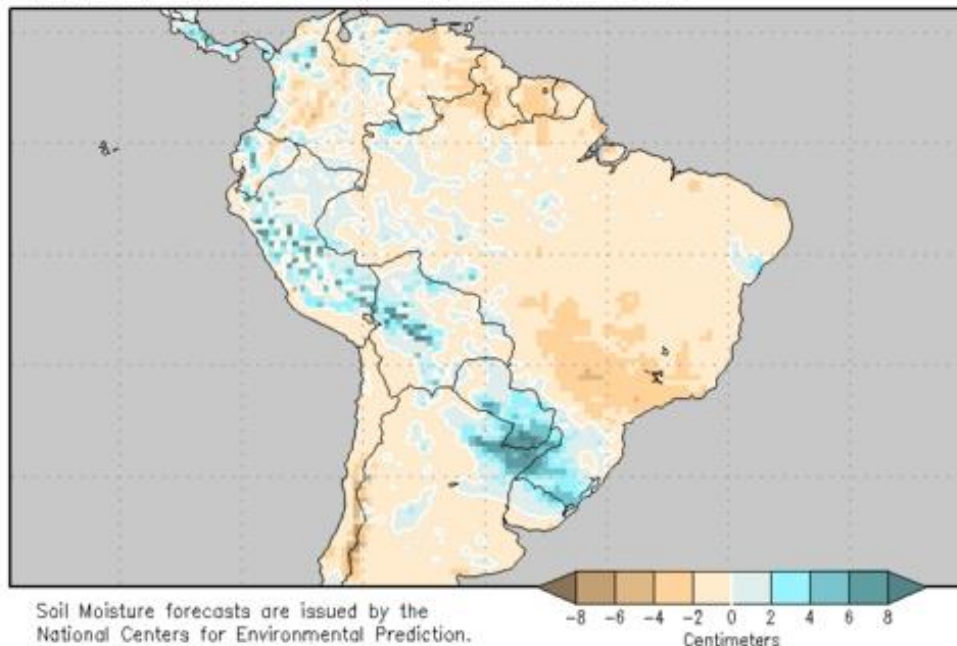
10002000 to 200102 Average

Source: IBGE Brazil



Forecast Soil Moisture Change

Fri, 28 SEP 2012 at 00Z -to- Fri, 05 OCT 2012 at 12Z



Soil Moisture forecasts are issued by the National Centers for Environmental Prediction.





ENFOAGRO

