

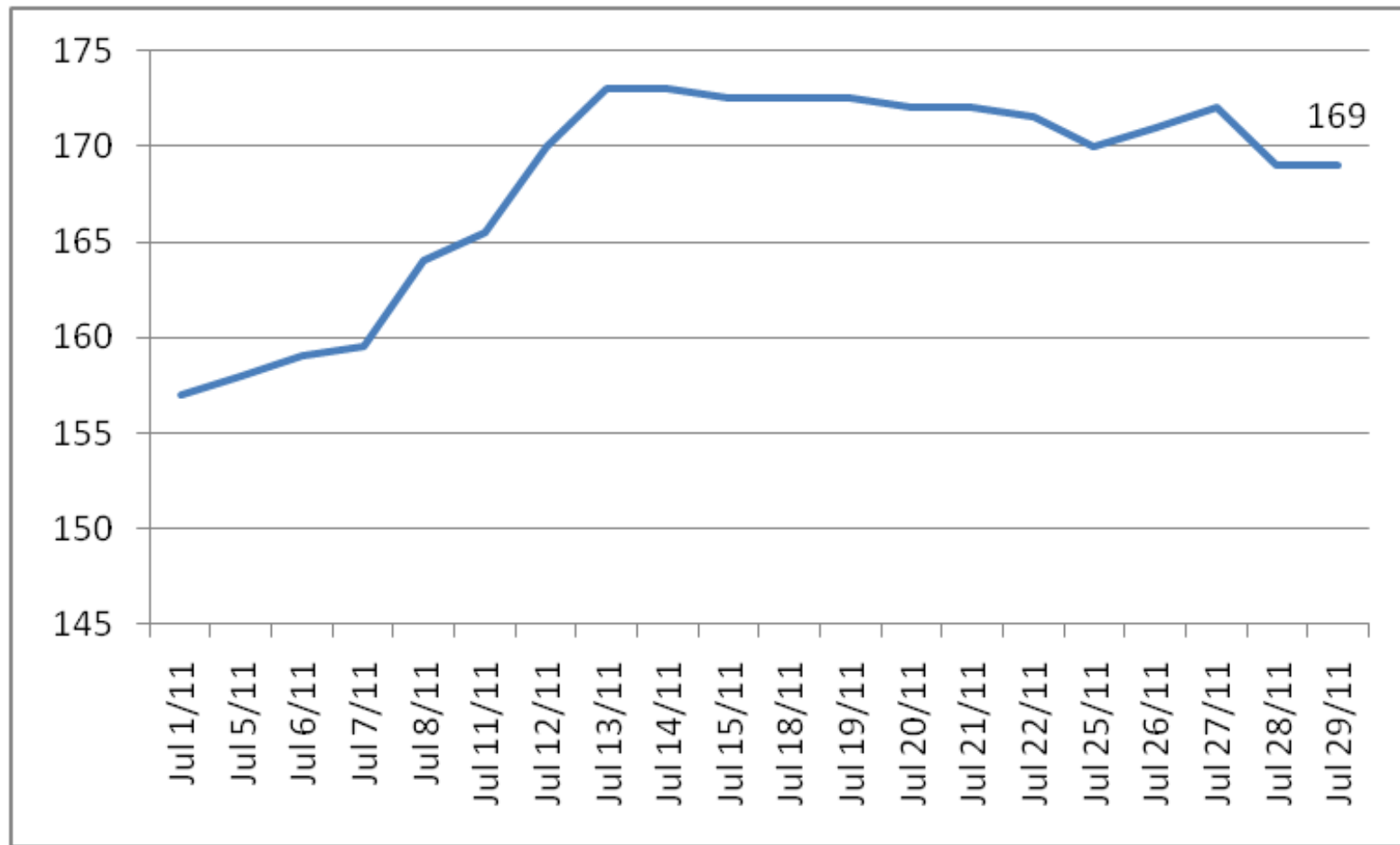
# EVOLUCION PRECIOS Y MARGENES DE MOLIENDA JULIO 2011



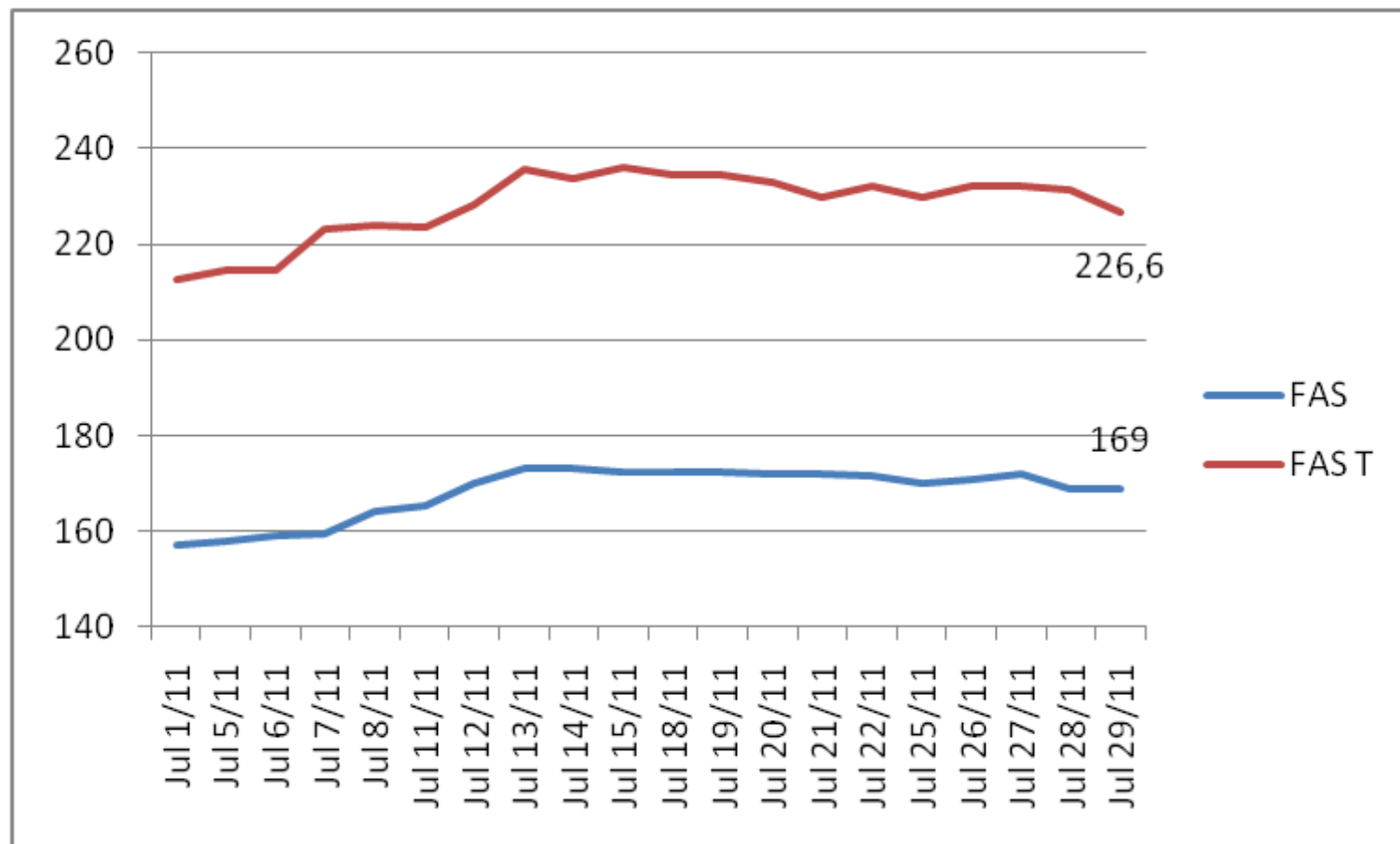
# MAIZ



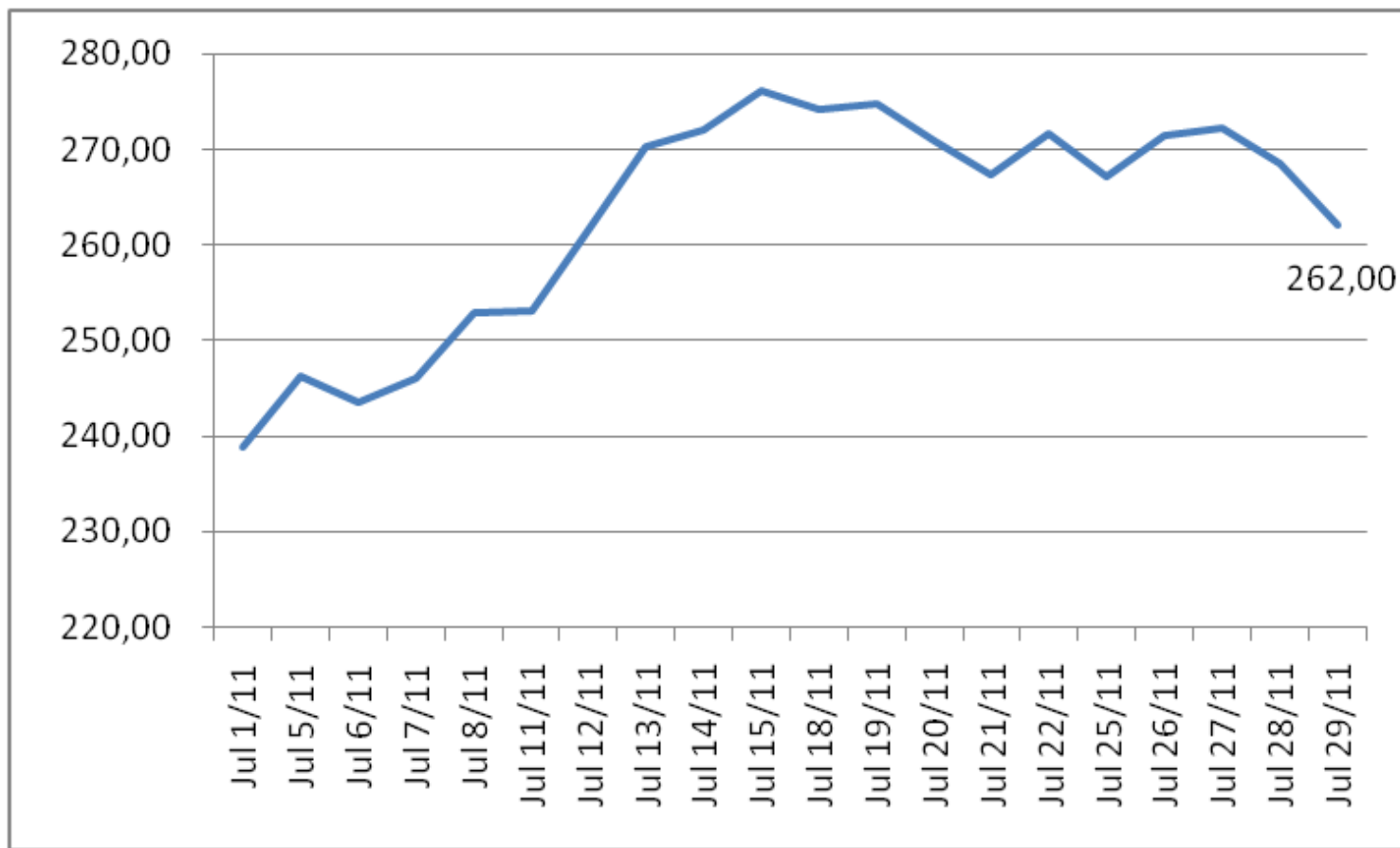
# PRECIOS DISPONIBLE MAIZ (u\$s/TN)



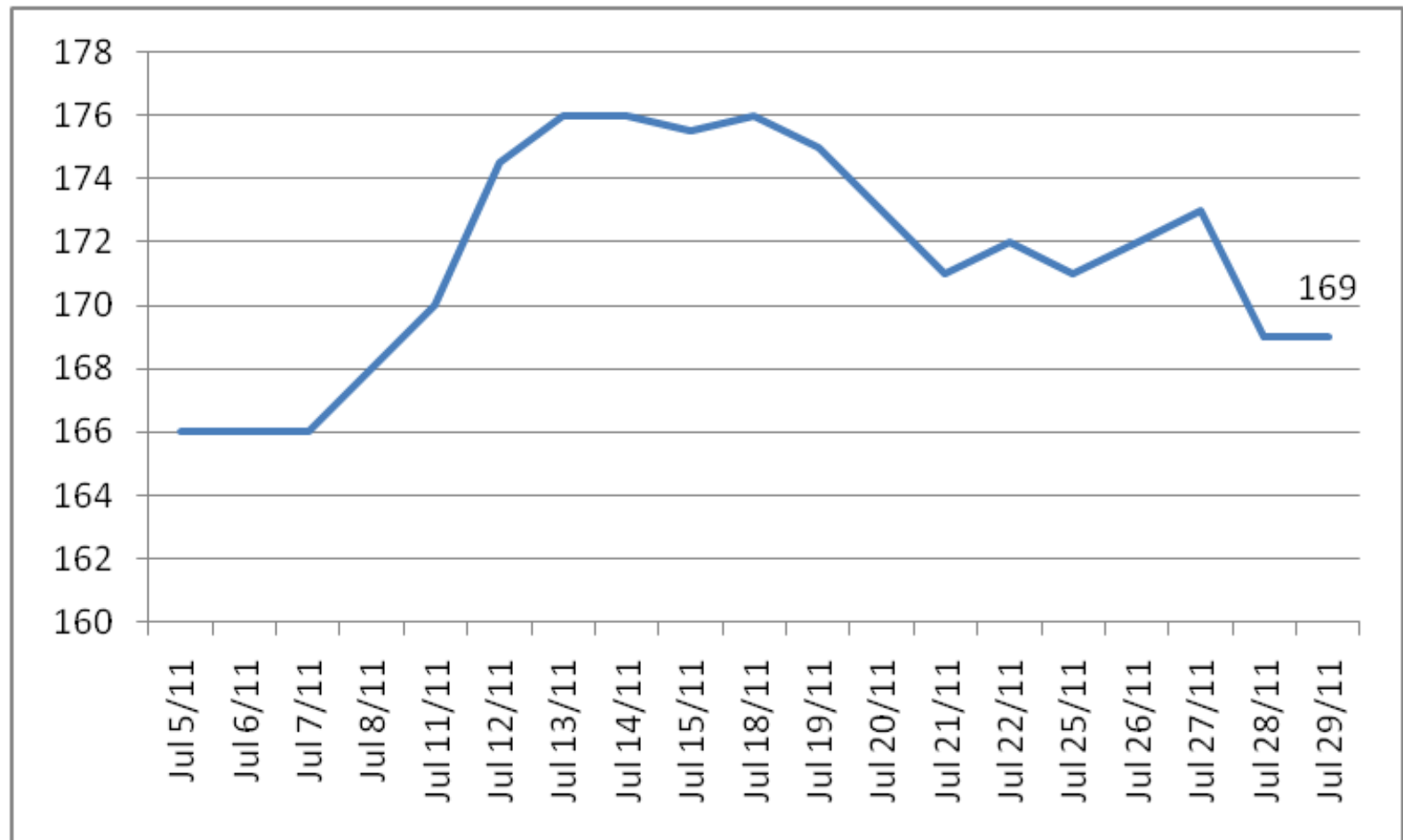
# FAS TEORICO VS FAS REAL MAIZ (u\$s/TN)



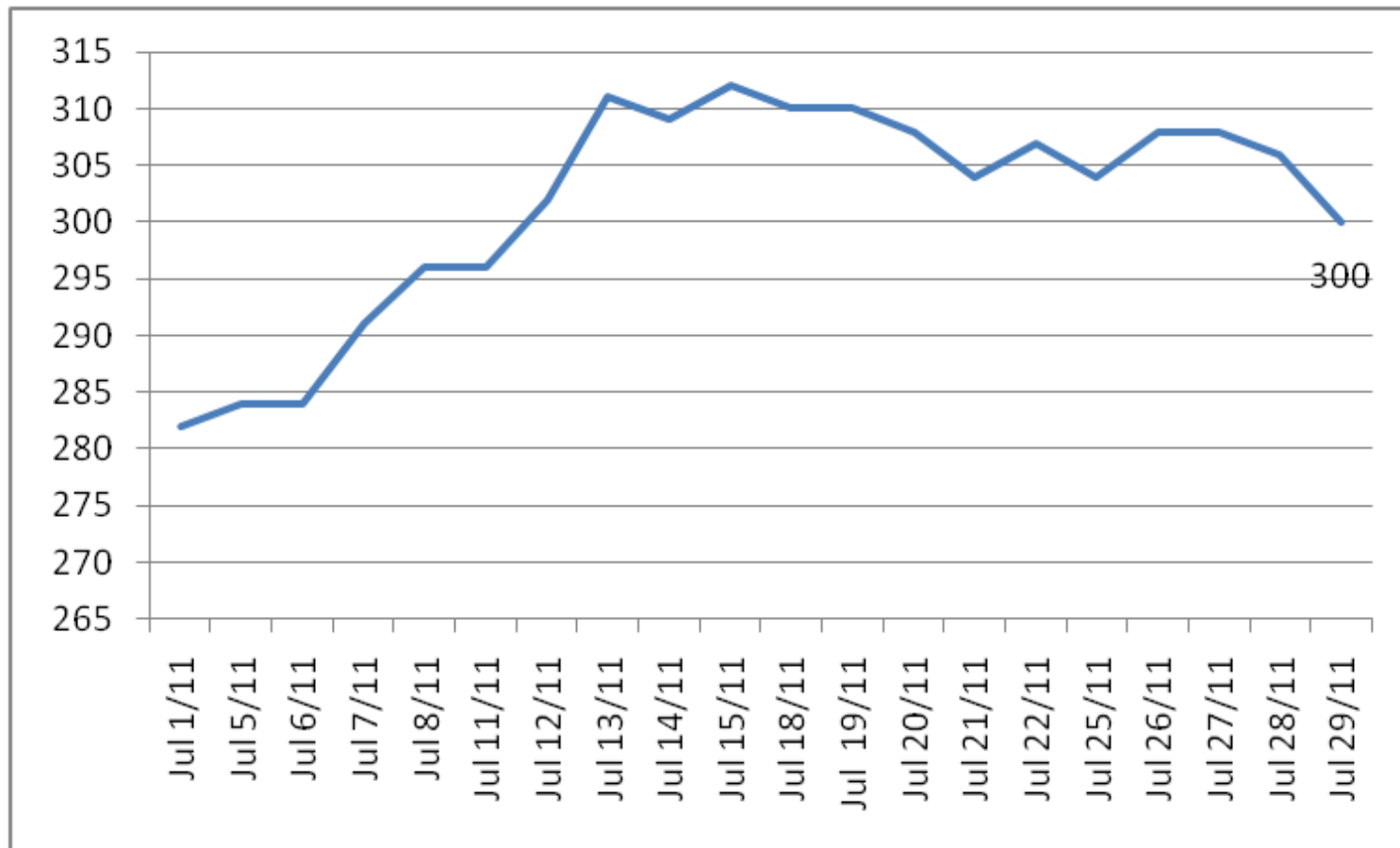
# POSICION SETIEMBRE MAIZ CBOT (u\$s/TN)



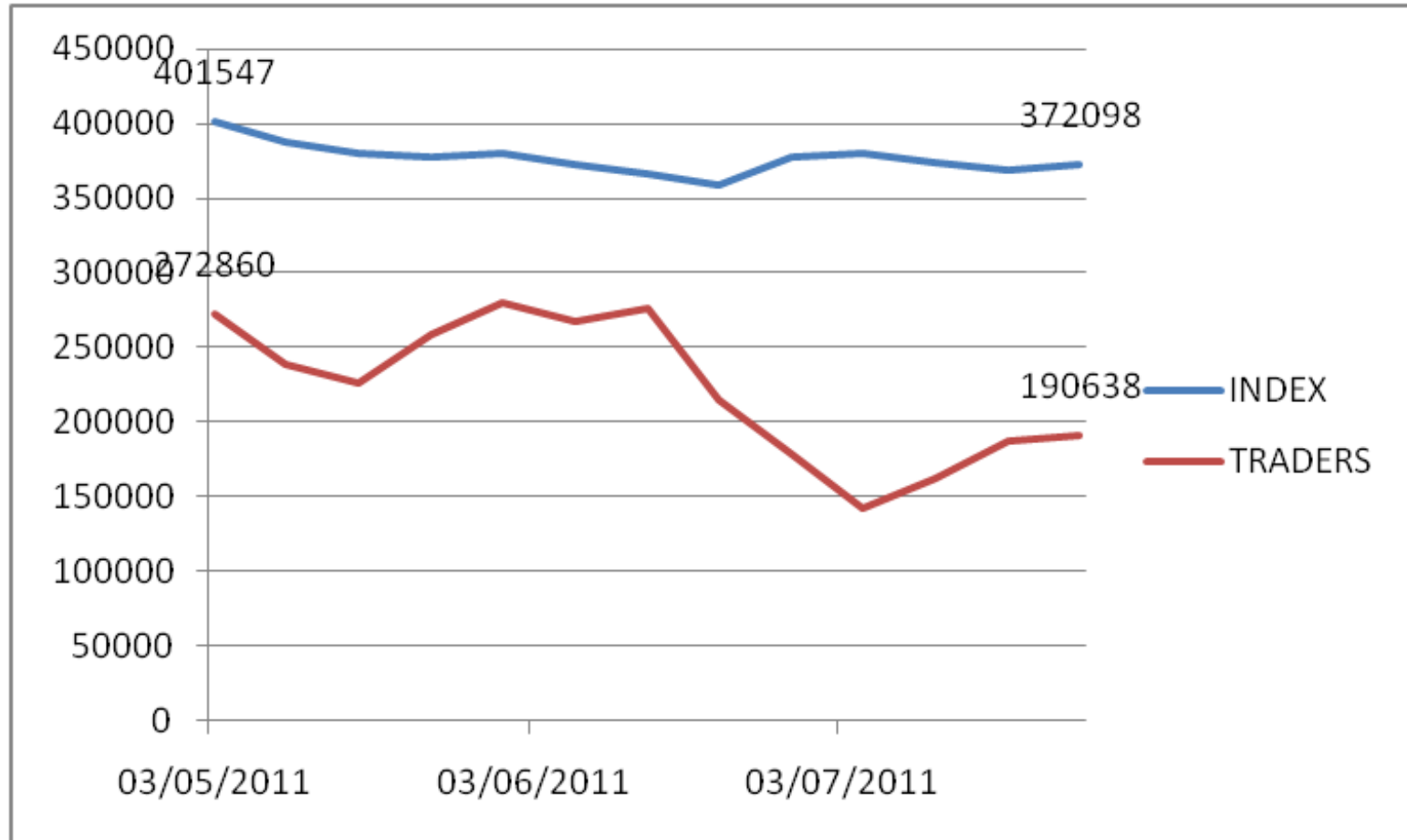
# POSICION SETIEMBRE MAIZ MATBA (u\$s/TN)



# FOB PA MAIZ (u\$s/TN)



# POSICION DE LOS FONDOS MAIZ

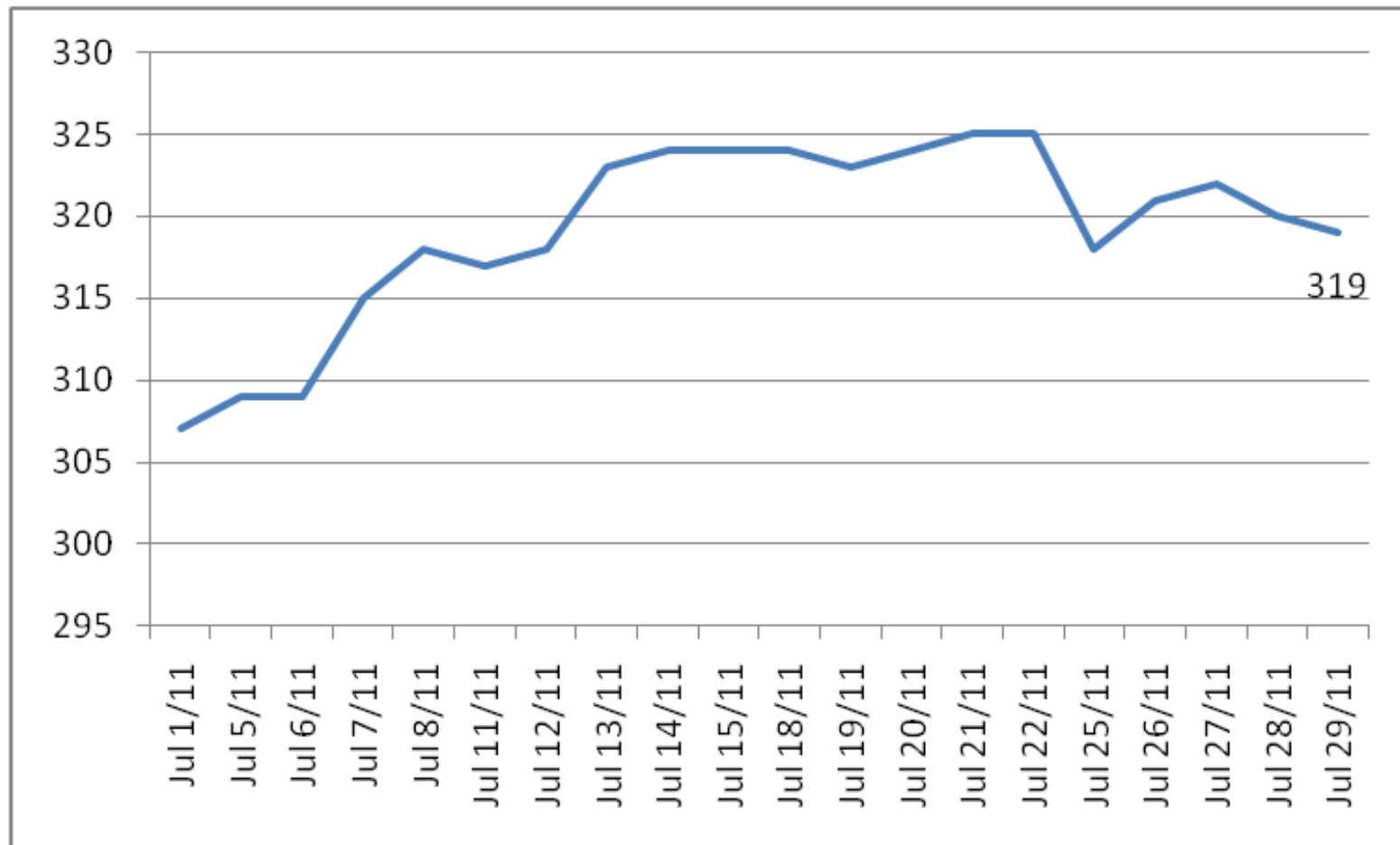




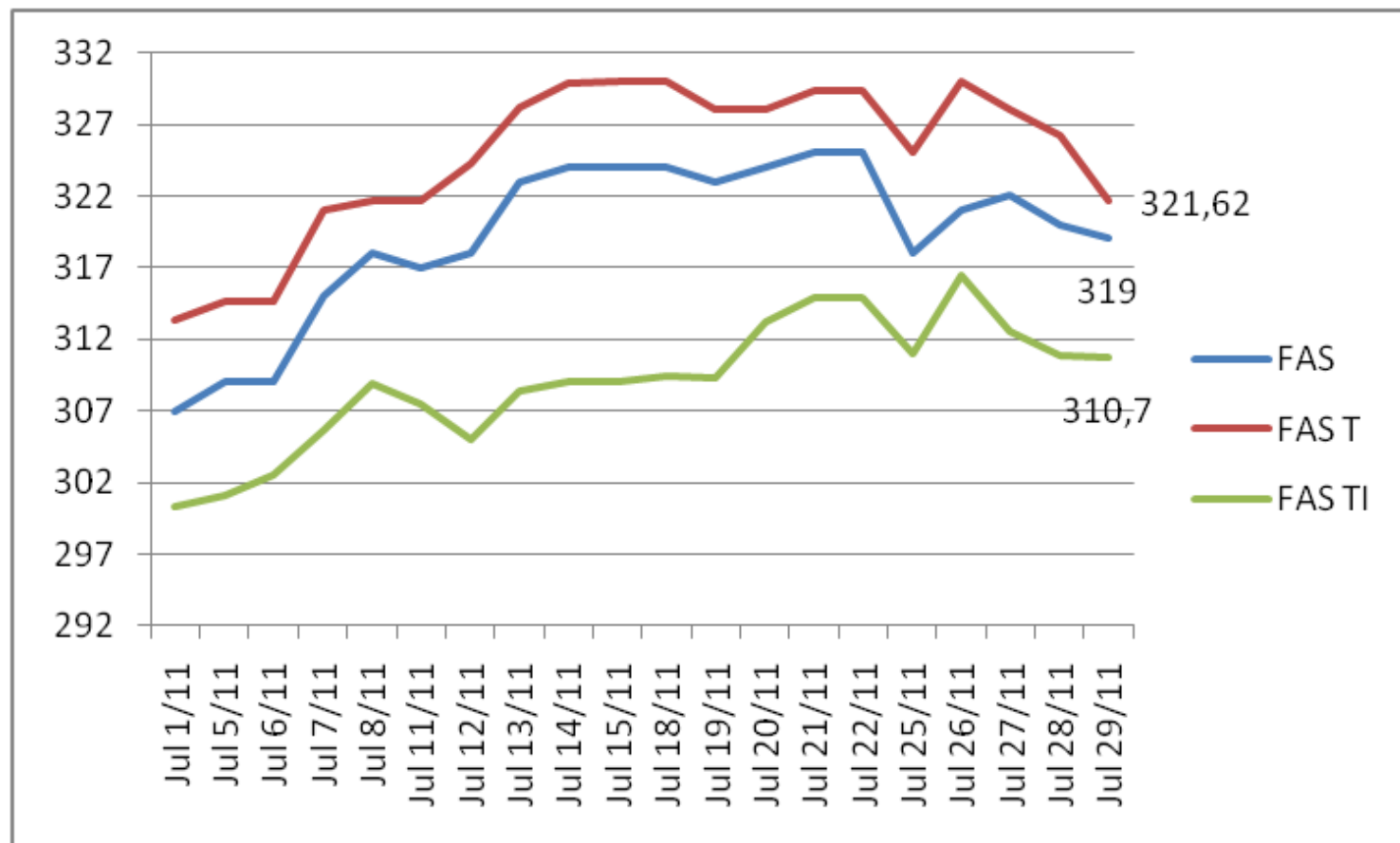
# SOJA



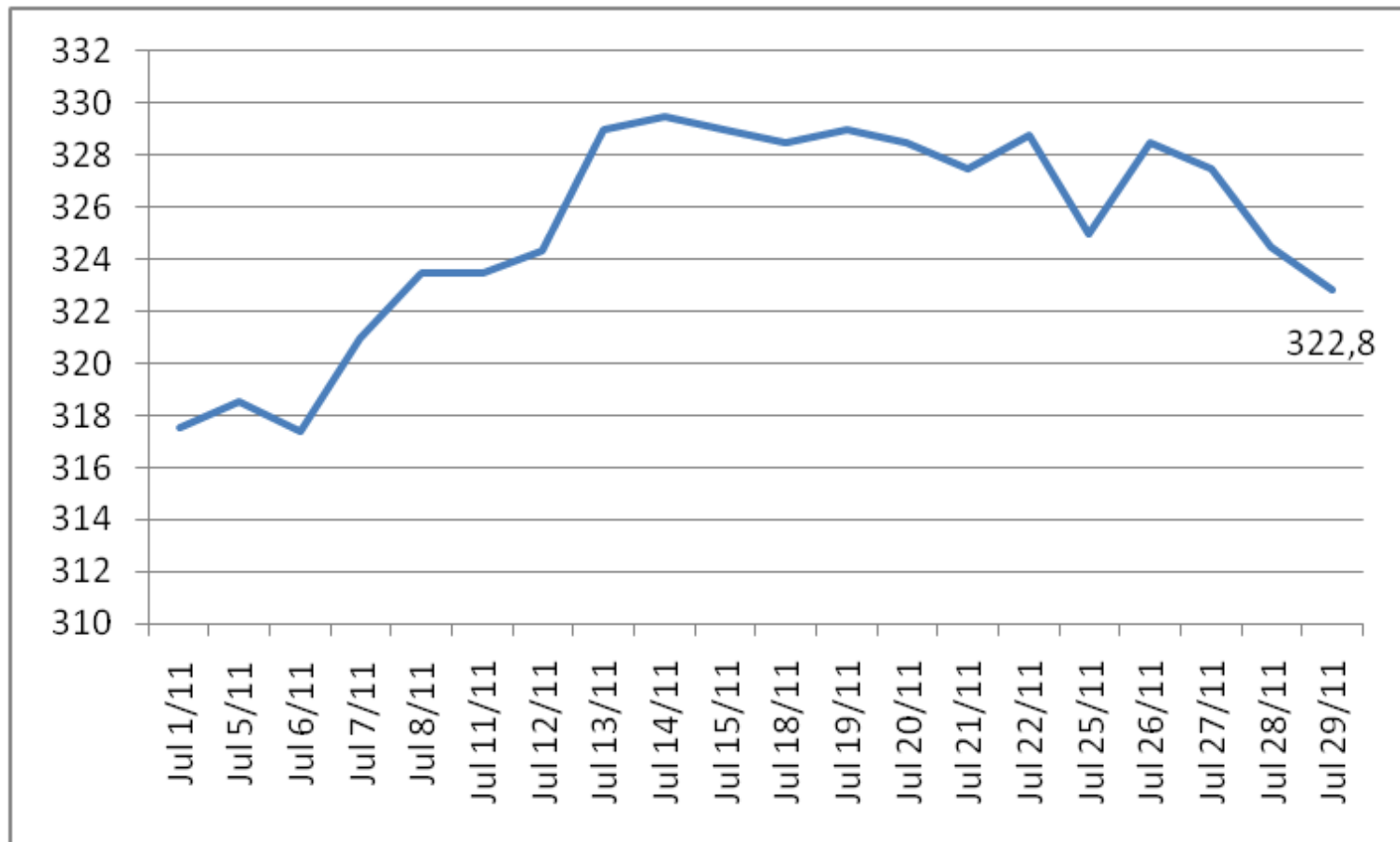
# PRECIOS DISPONIBLE SOJA (u\$s/TN)



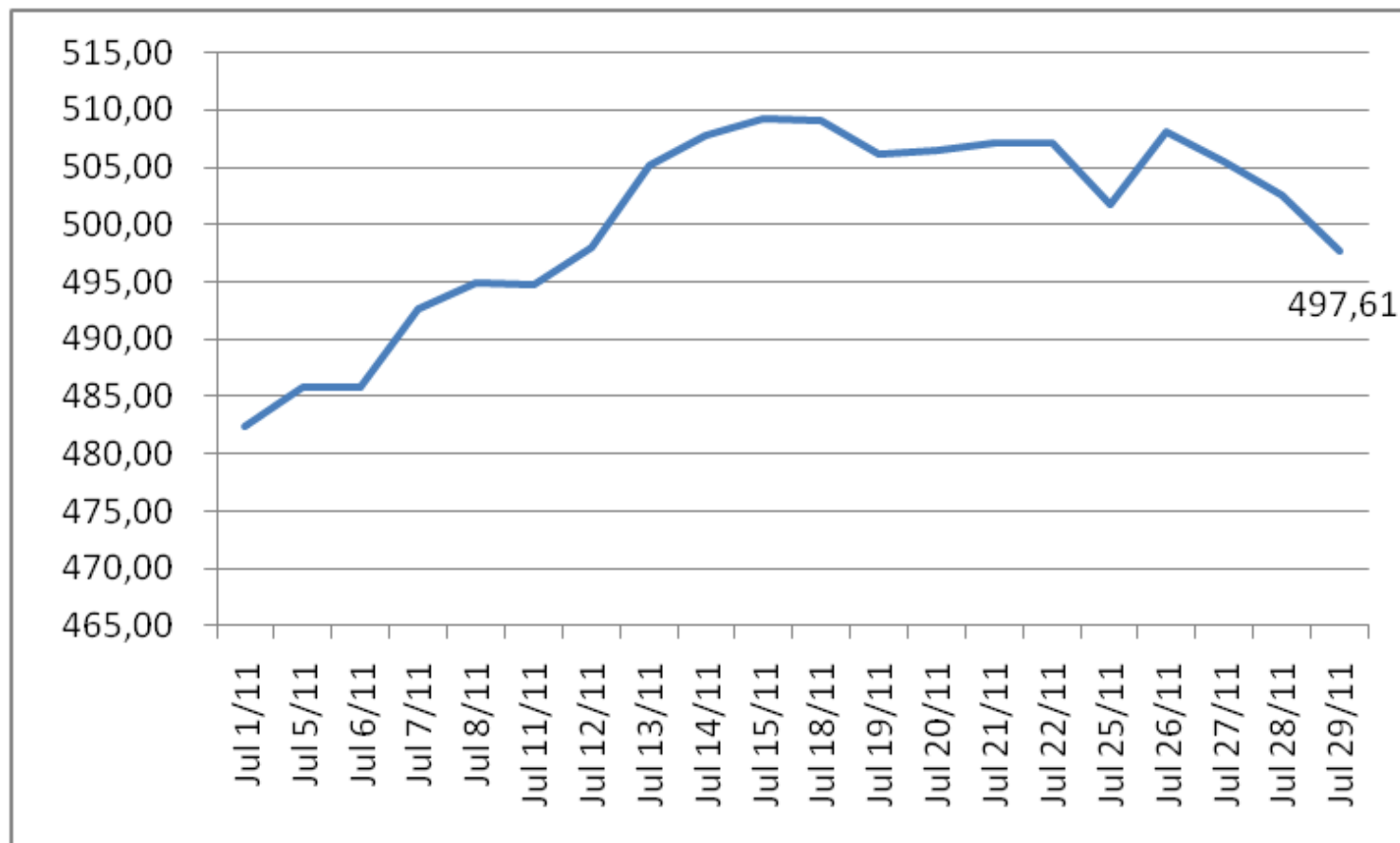
# FAS TEORICO VS FAS REAL SOJA (u\$s/TN)



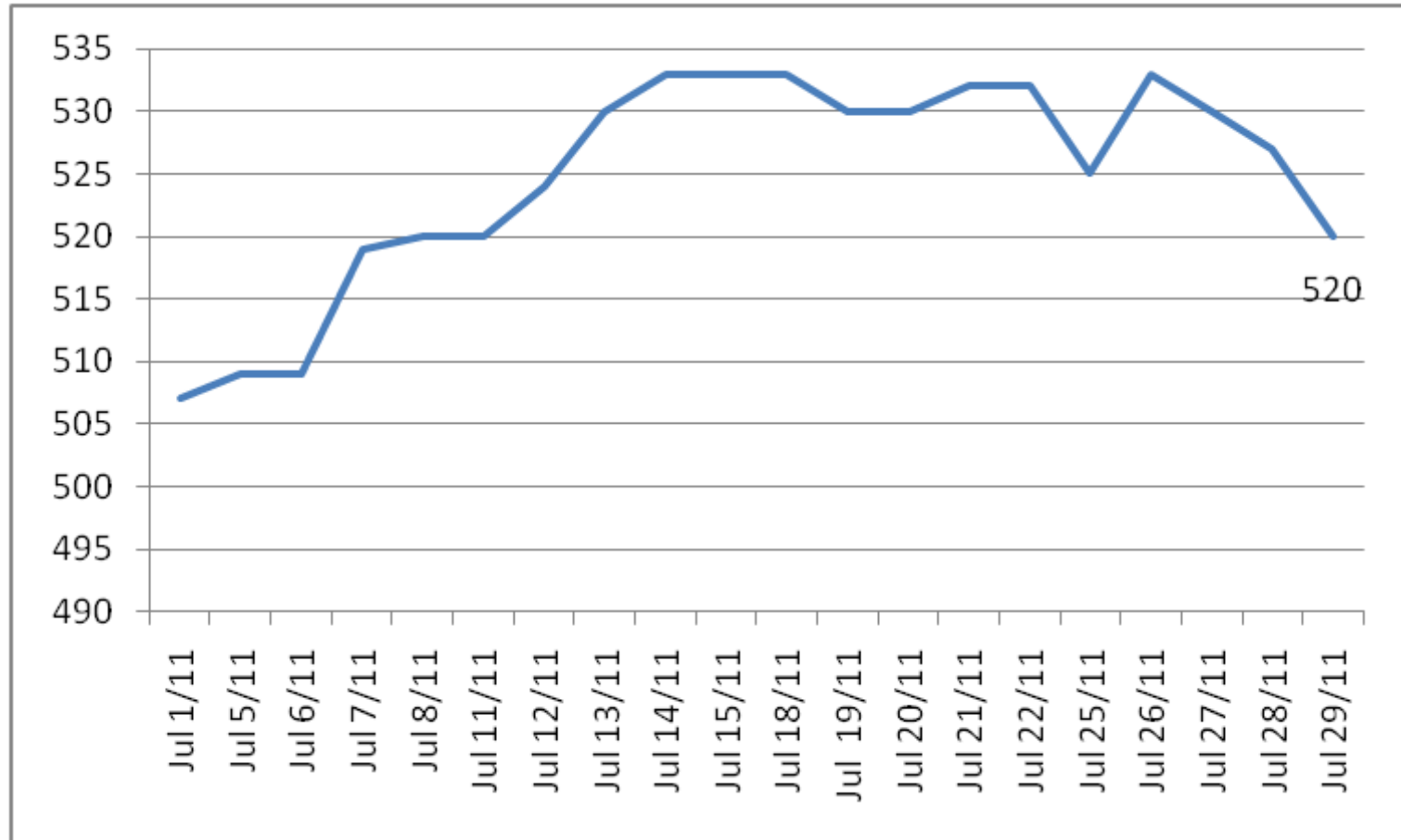
# POSICION SETIEMBRE SOJA MATBA (u\$s/TN)



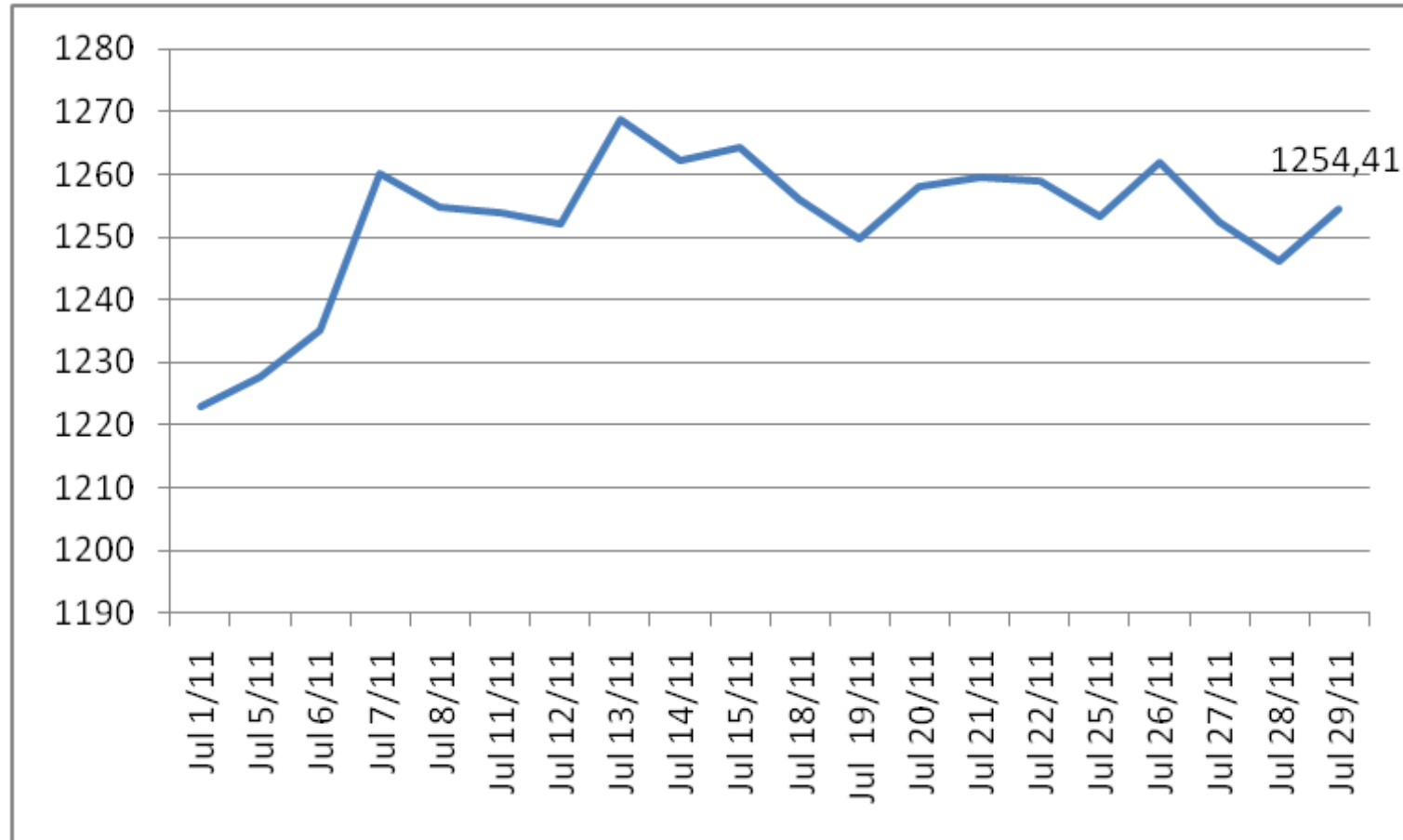
# POSICION AGOSTO SOJA CBOT (u\$s/TN)



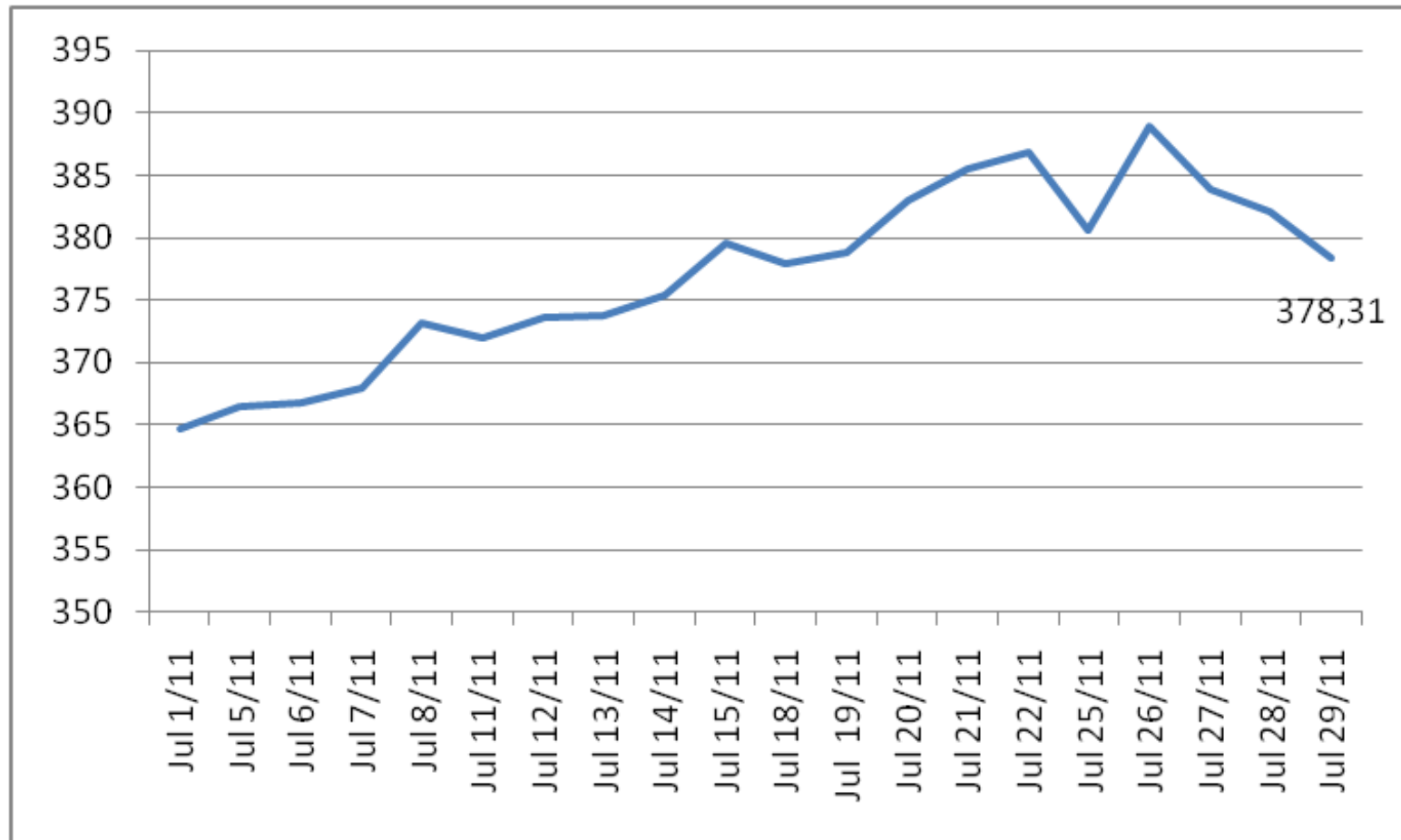
# FOB PA SOJA (u\$s/TN)



# FOB PA ACEITE DE SOJA (u\$s/TN)

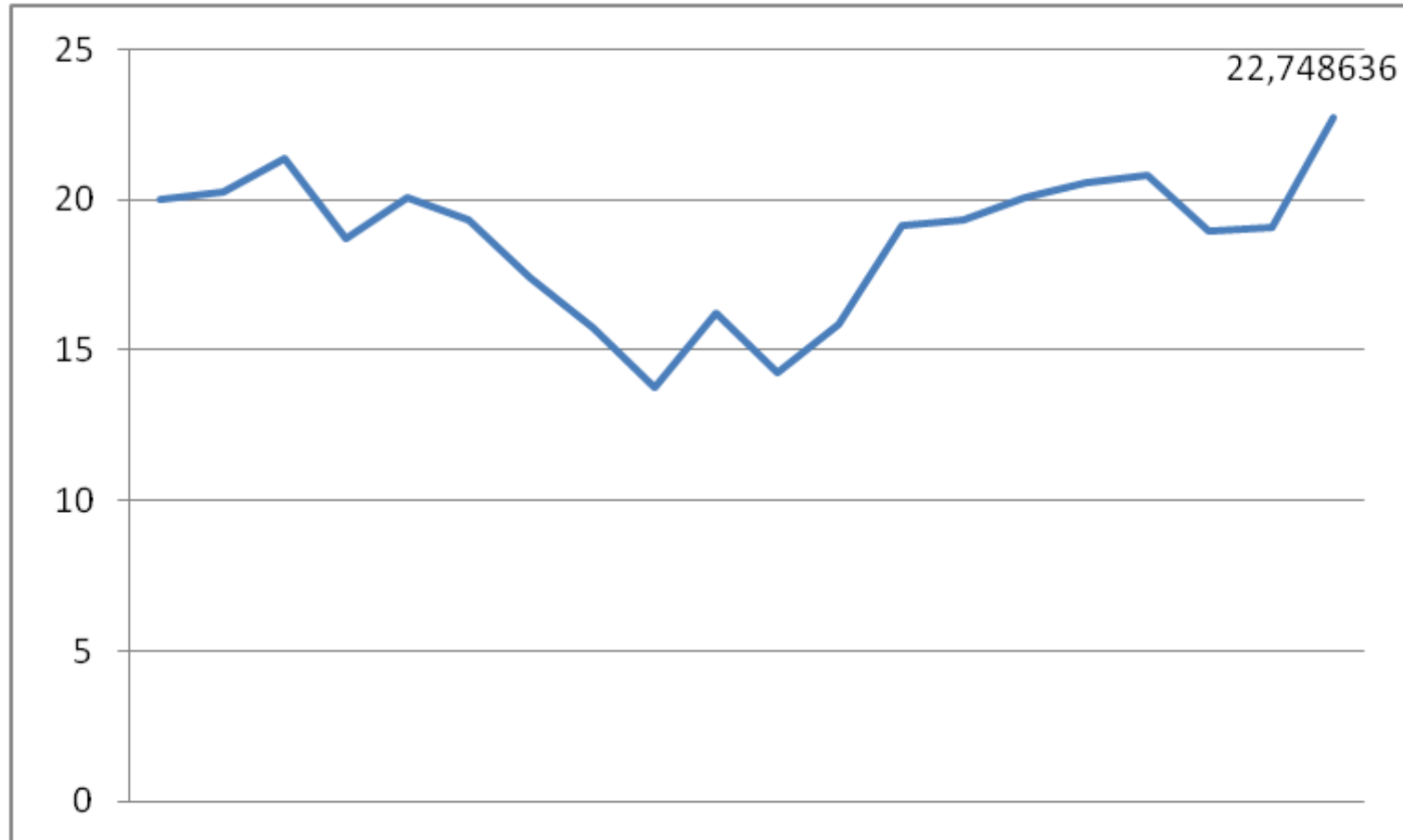


# FOB PA HARINA DE SOJA (u\$s/TN)

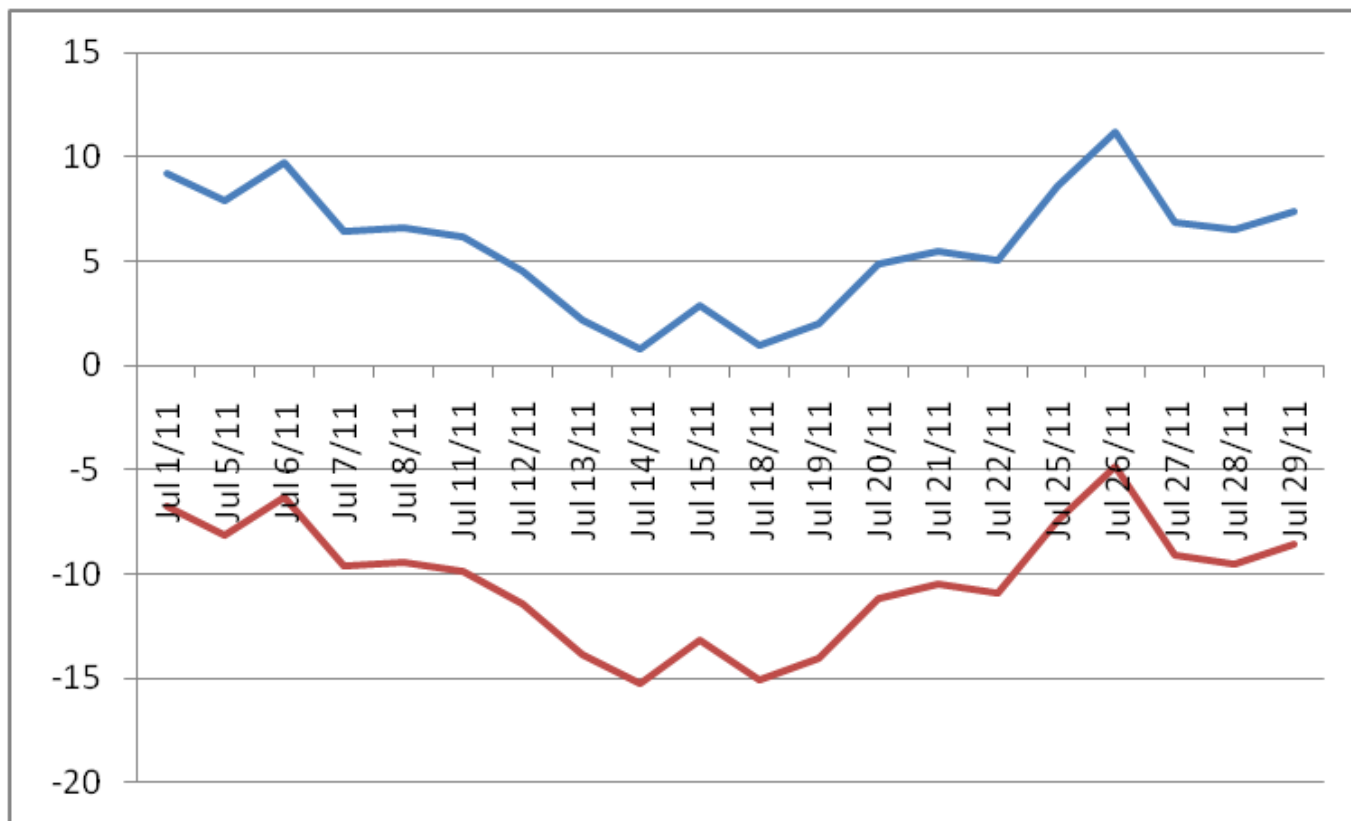




# MARGEN BRUTO DE PROCESAMIENTO SOJA (u\$s/TN)



# MARGEN BRUTO Y NETO DE MOLIENDA SOJA (u\$s/TN)



COSTO INDUSTRIALIZACION u\$s 16/TN

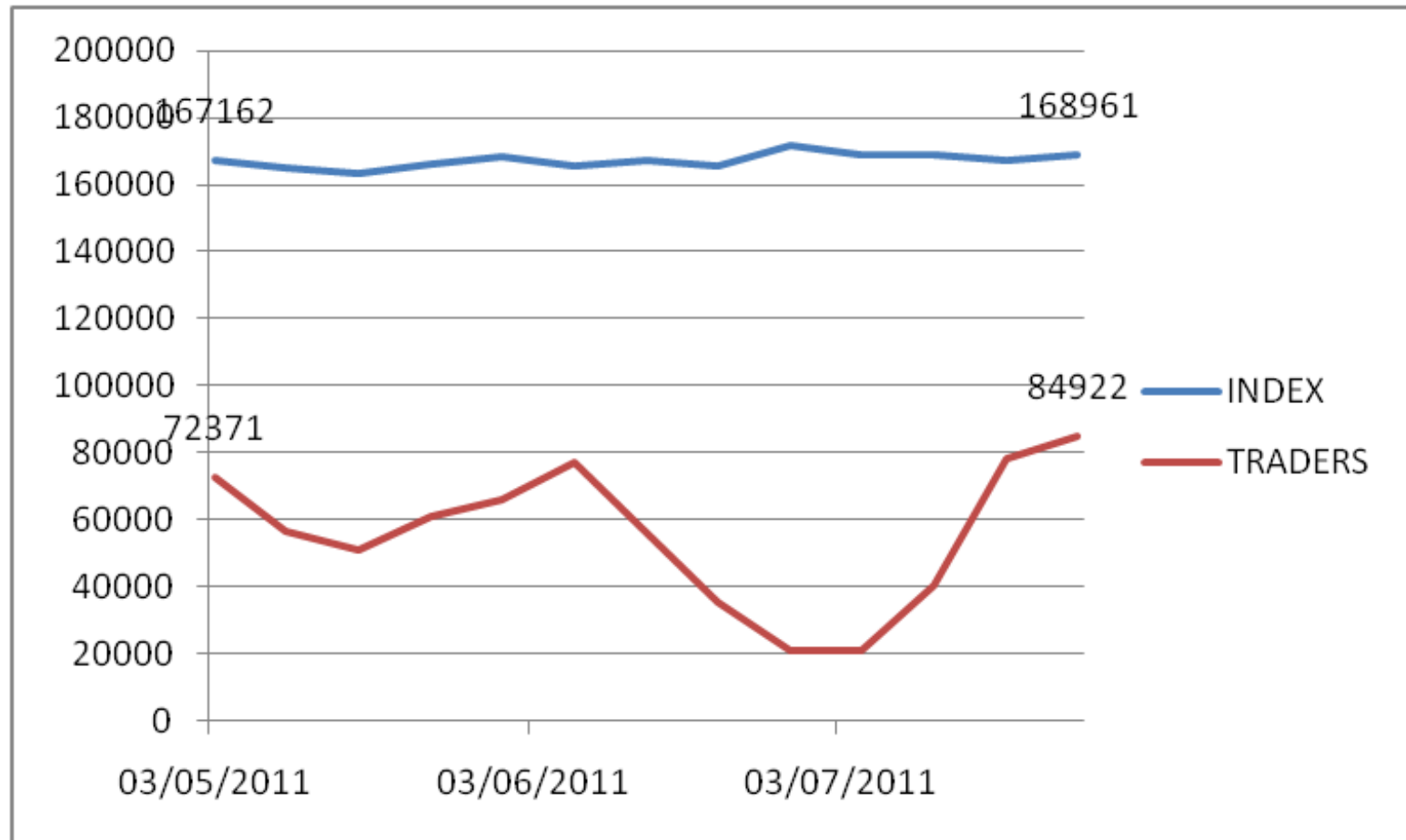


# BIOCOMBUSTIBLES

- Para el mes de Julio 5069 \$/tonelada (1239,4 u\$s/tonelada).
- El precio en cuestión es un 0,8% inferior al promedio registrado por el precio FOB oficial de aceite de soja crudo en el presente mes julio: 1250 u\$s/tonelada.
- En lo que va del año, el único mes en el cual el precio mensual oficial del biodiesel fue superior al FOB oficial del aceite de soja fue mayo de 2011.
- En los cuatro primeros meses de 2011 la diferencia negativa entre ambos valores fue de 12,4% a 15,9%.



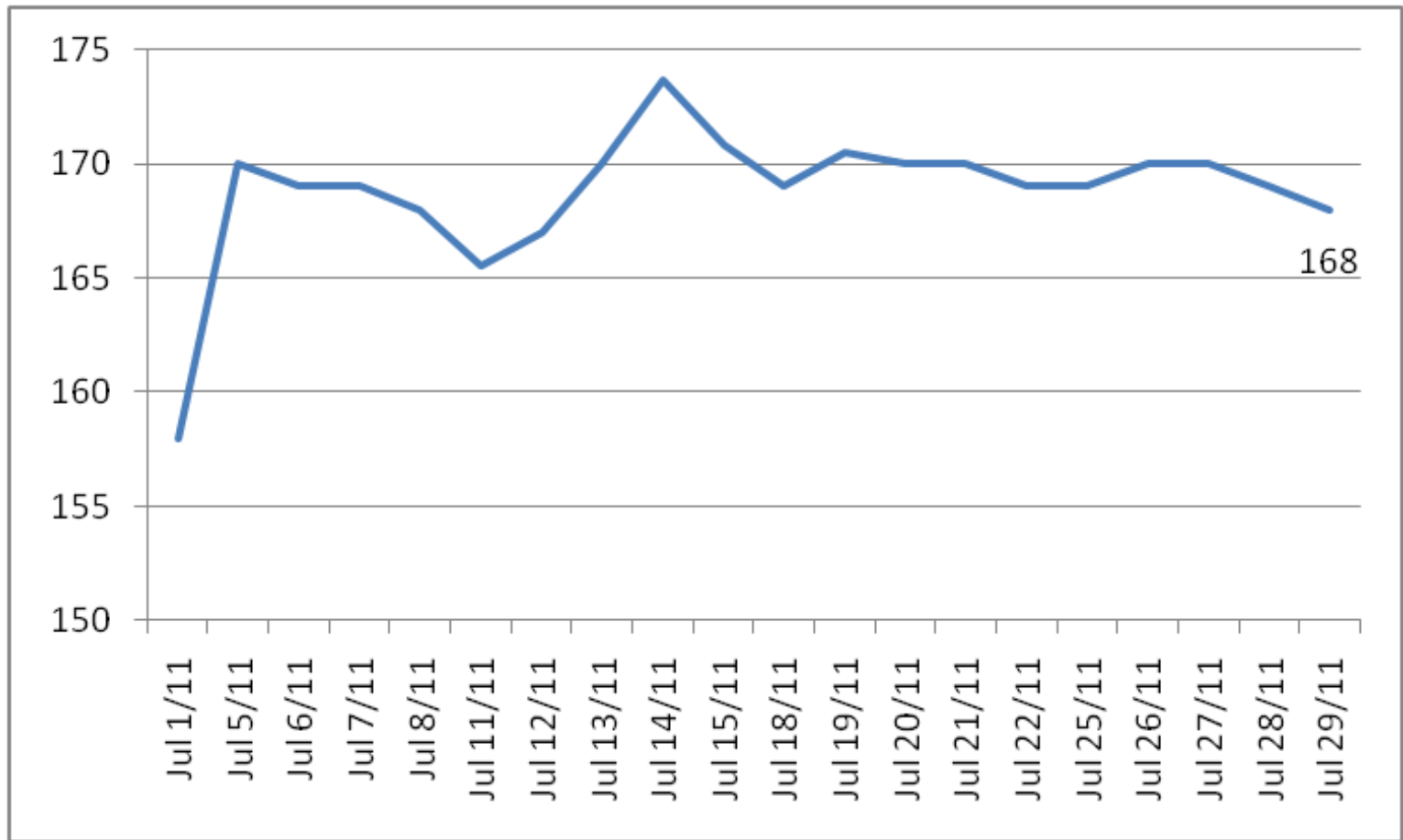
# POSICION DE LOS FONDOS SOJA



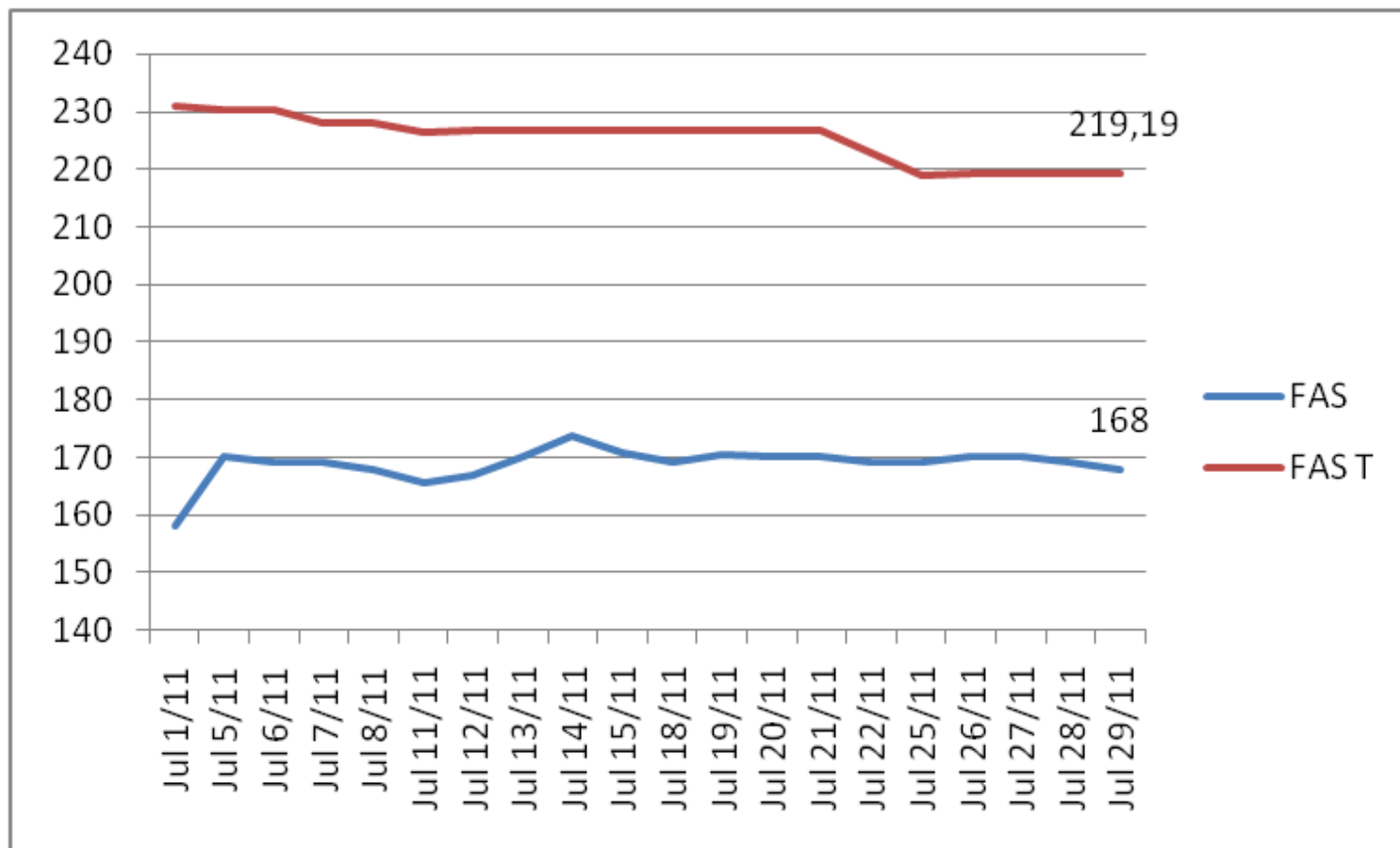
# TRIGO



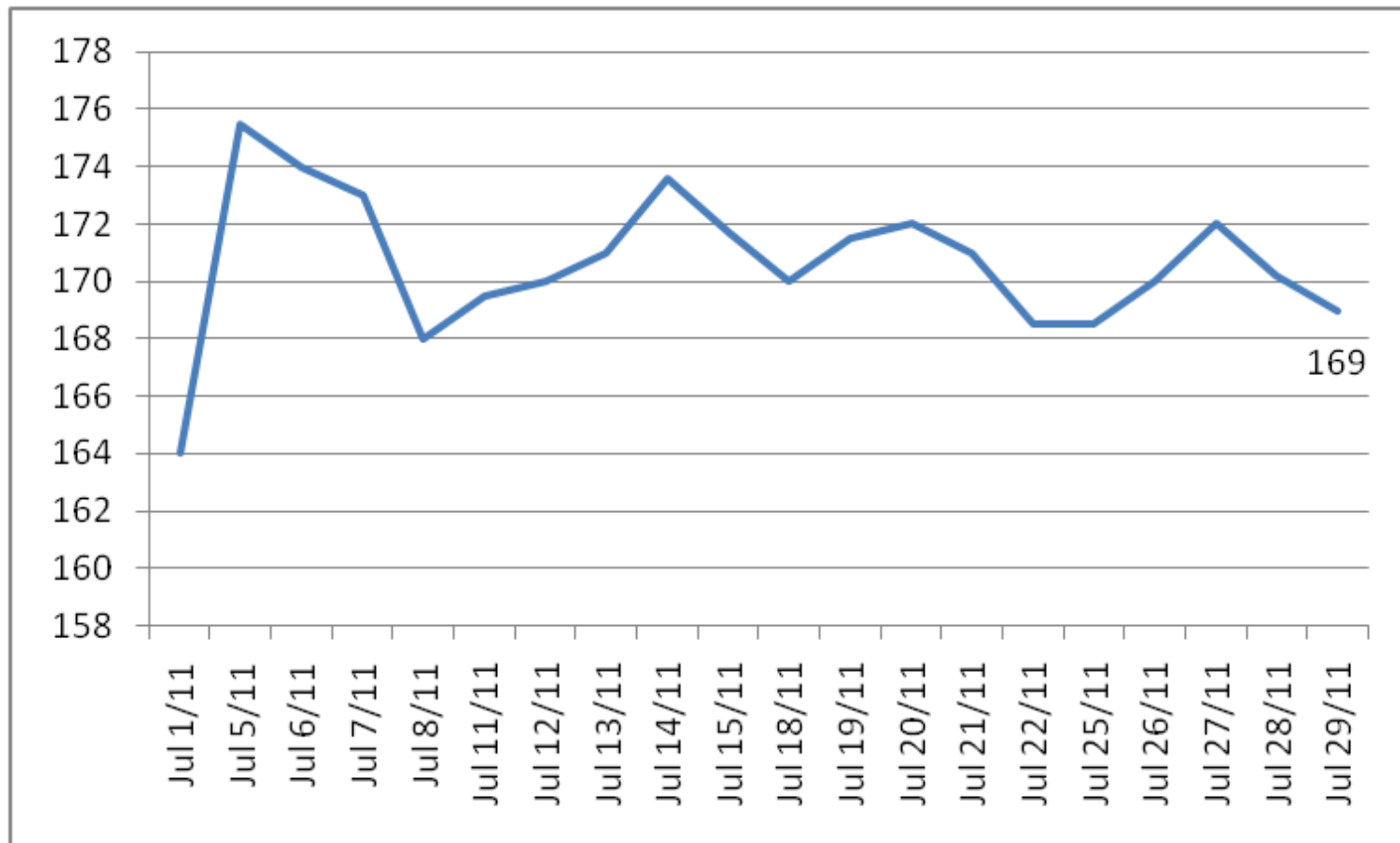
# PRECIOS DISPONIBLE TRIGO (u\$s/TN)



# FAS TEORICO VS FAS REAL TRIGO (u\$s/TN)

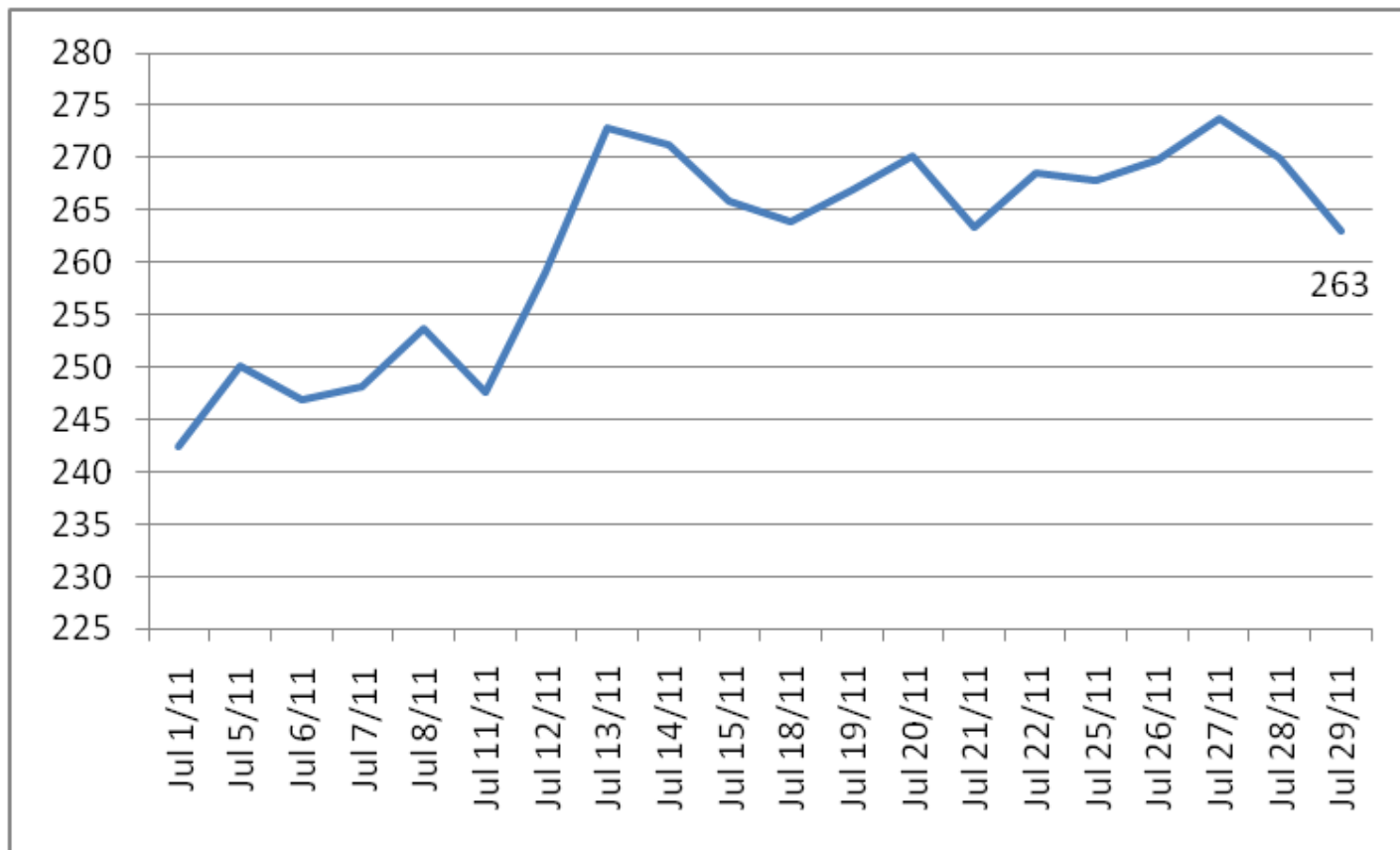


# POSICION SETIEMBRE TRIGO MATBA (u\$s/TN)

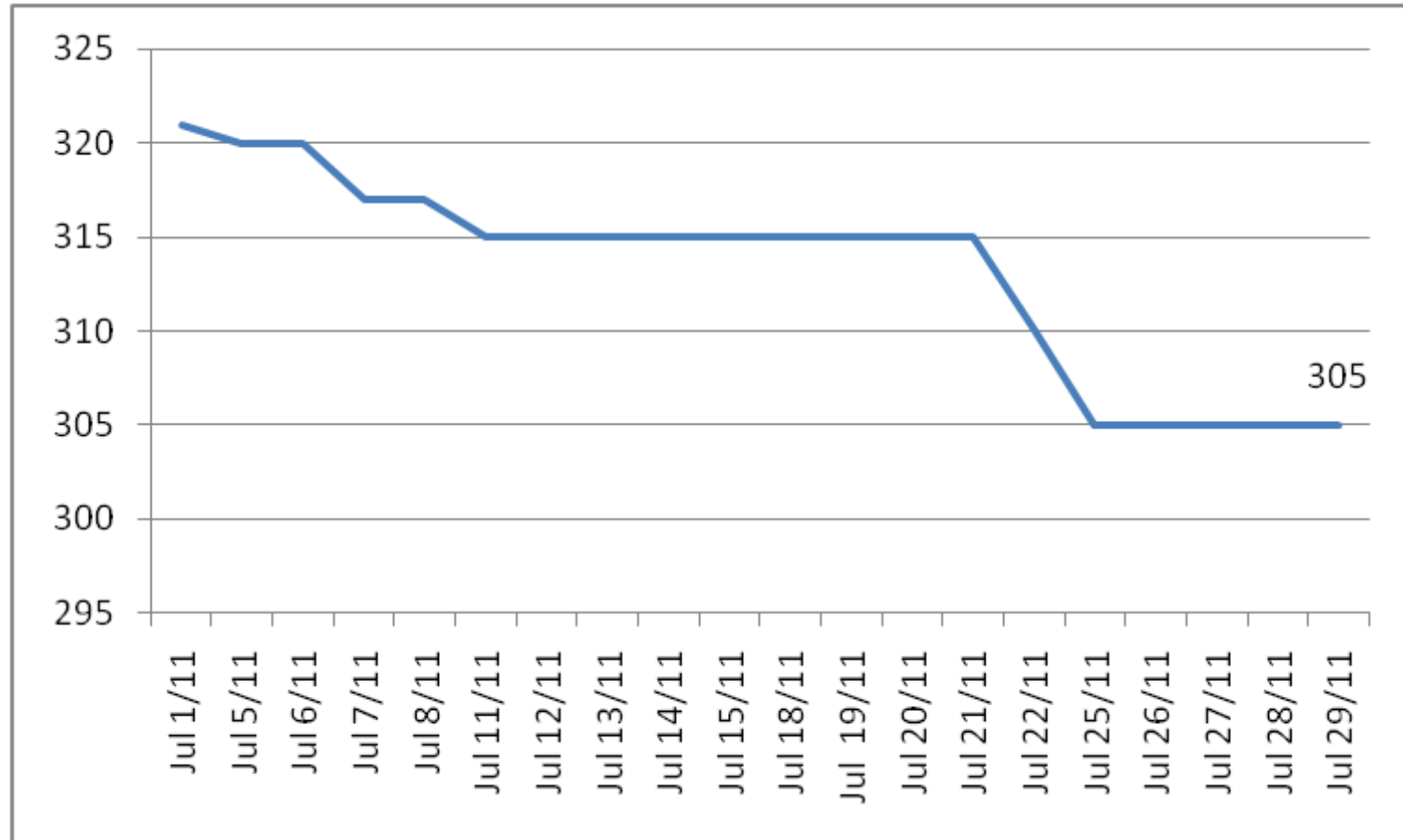




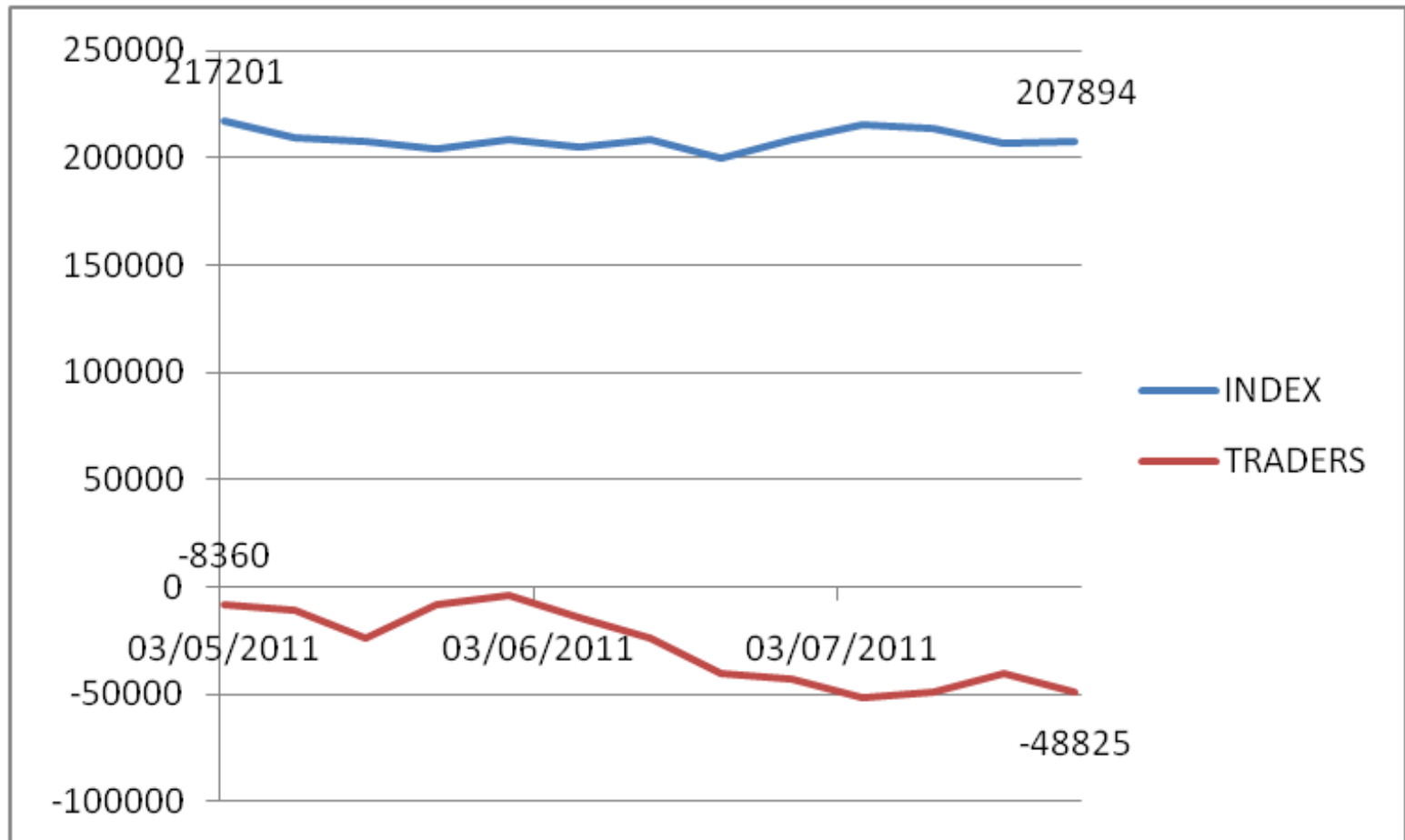
# POSICION DICIEMBRE TRIGO CBOT (u\$s/TN)



# FOB PA TRIGO (u\$s/TN)



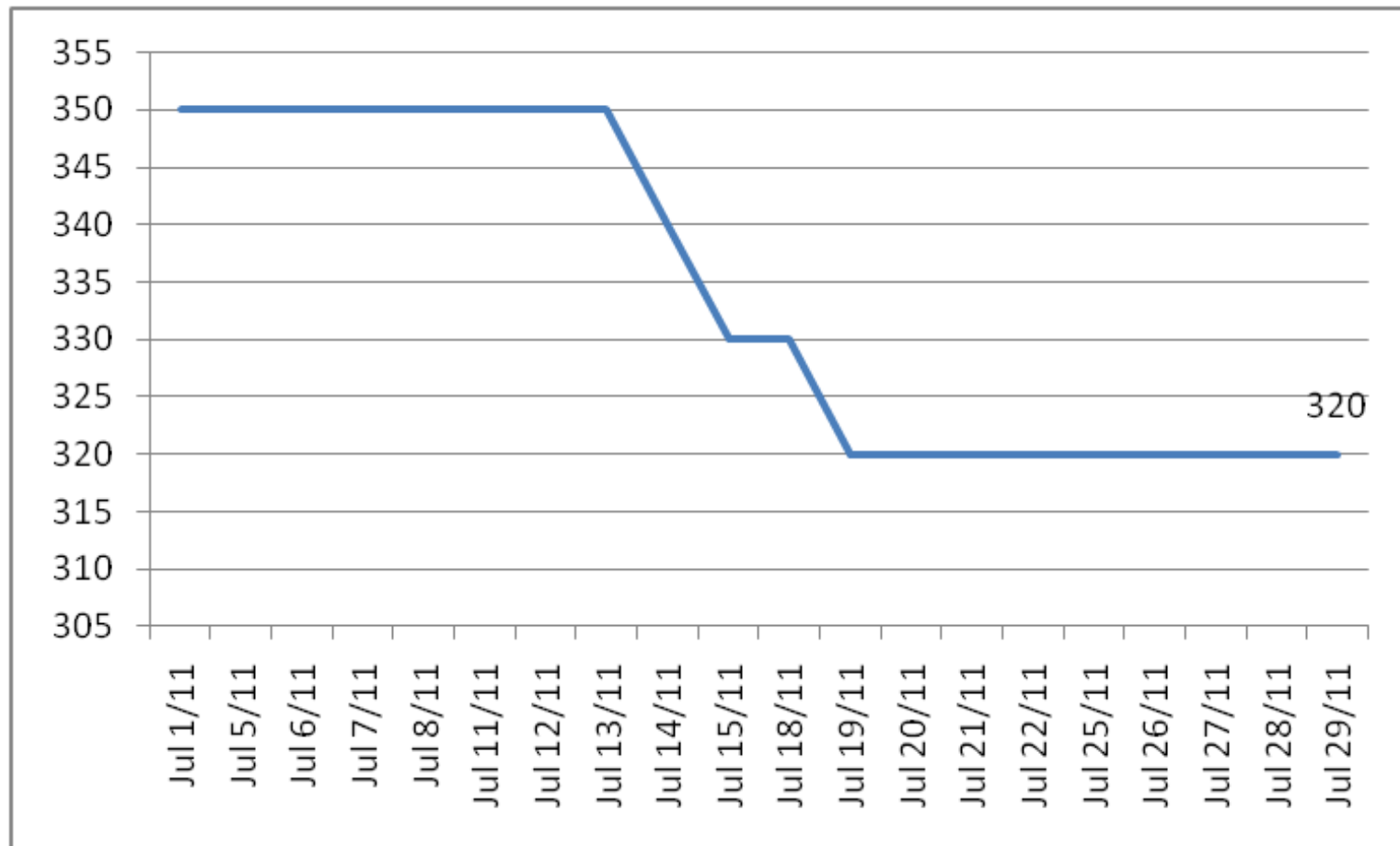
# POSICION DE LOS FONDOS TRIGO



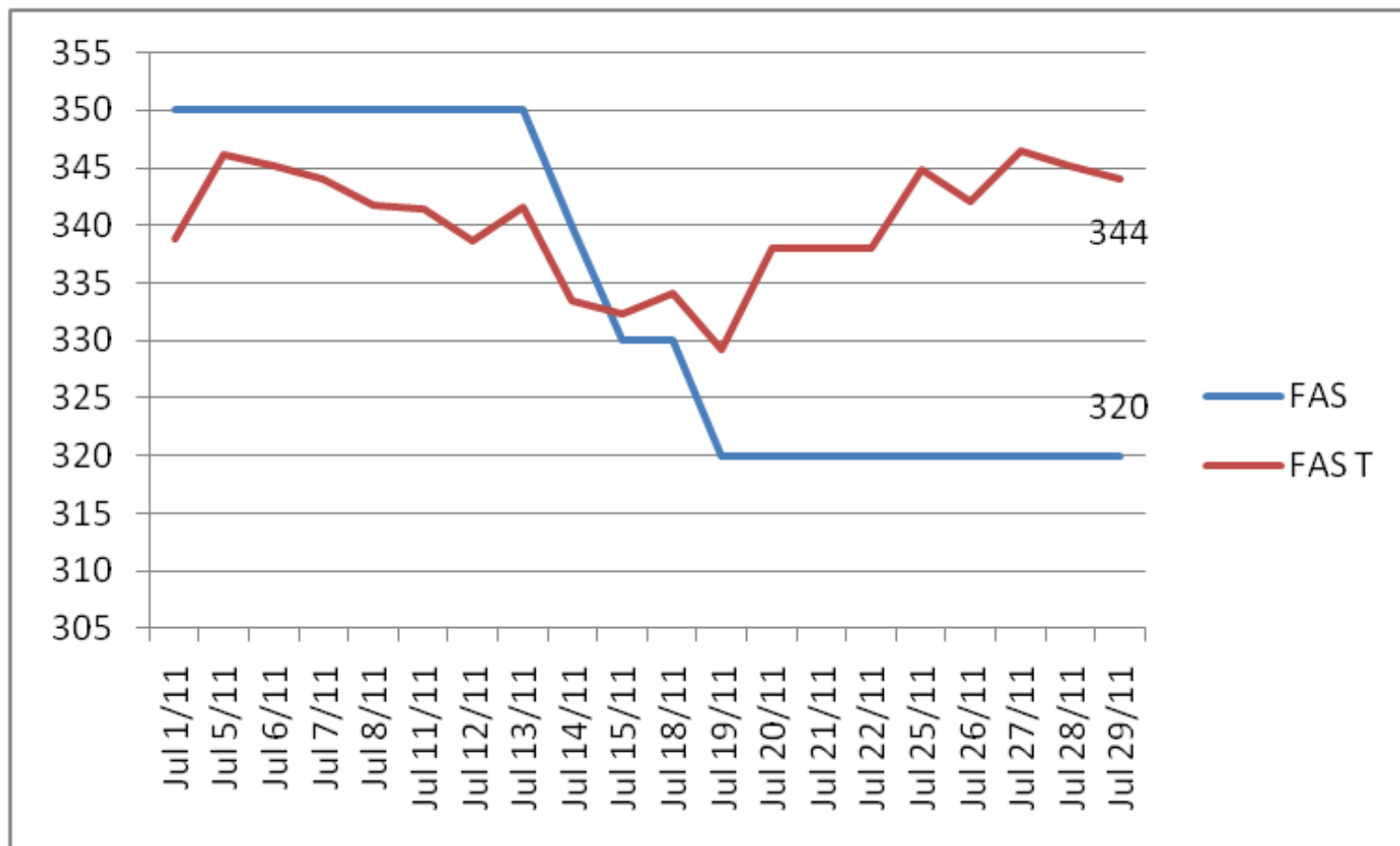
# GIRASOL



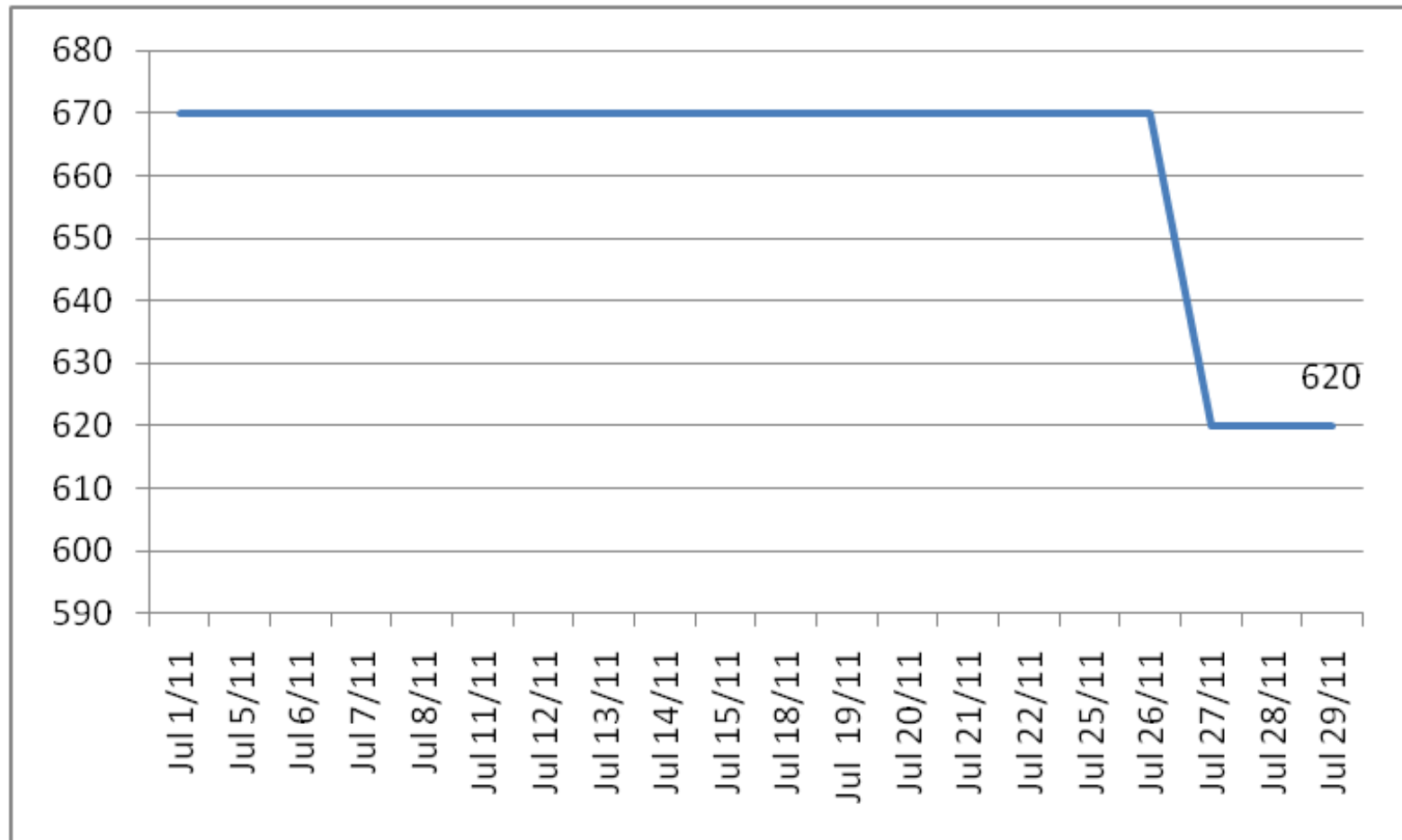
# PRECIOS DISPONIBLE GIRASOL (u\$s/TN)



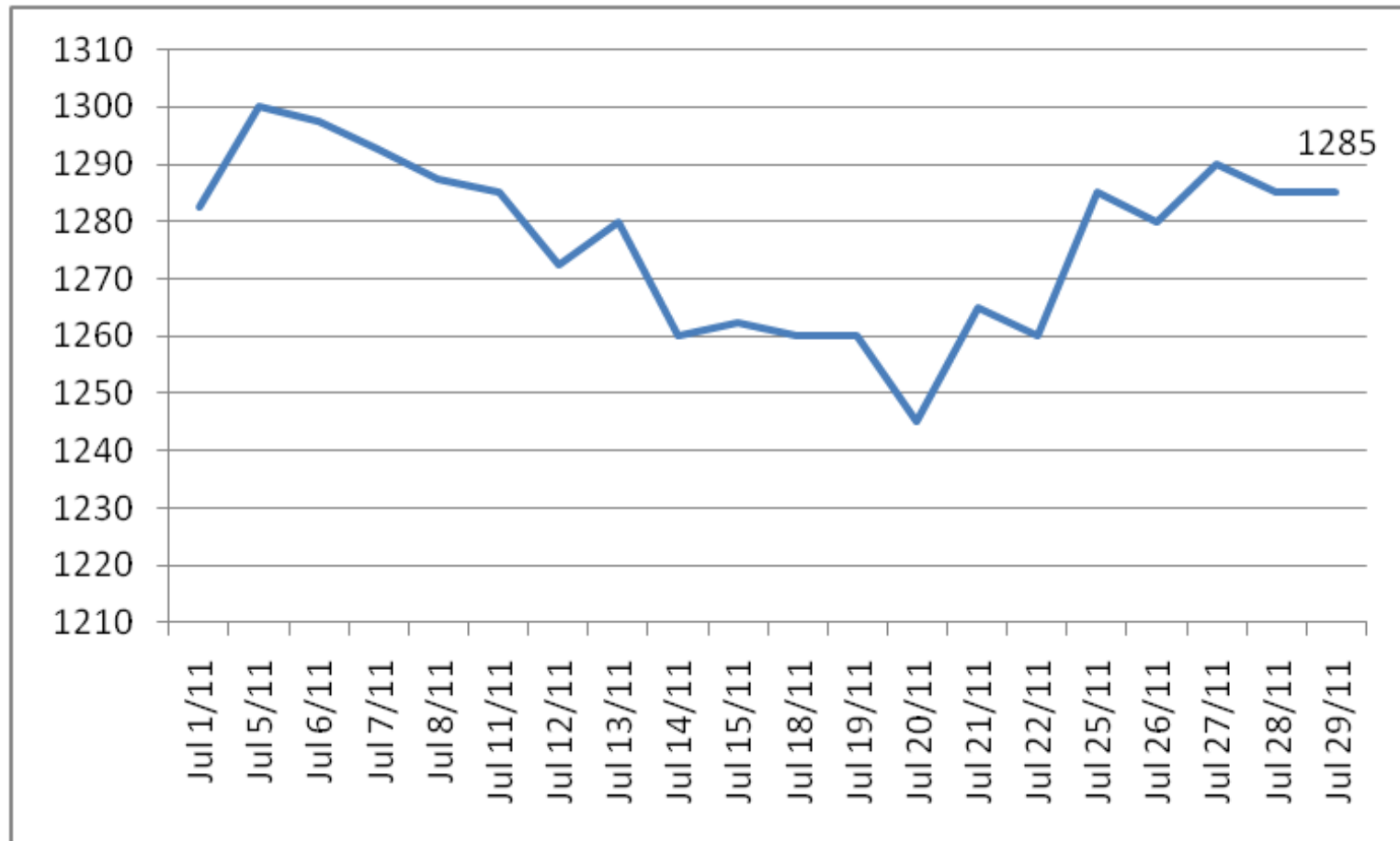
# FAS TEORICO VS FAS REAL GIRASOL (u\$s/TN)



# FOB PA GIRASOL (u\$s/TN)

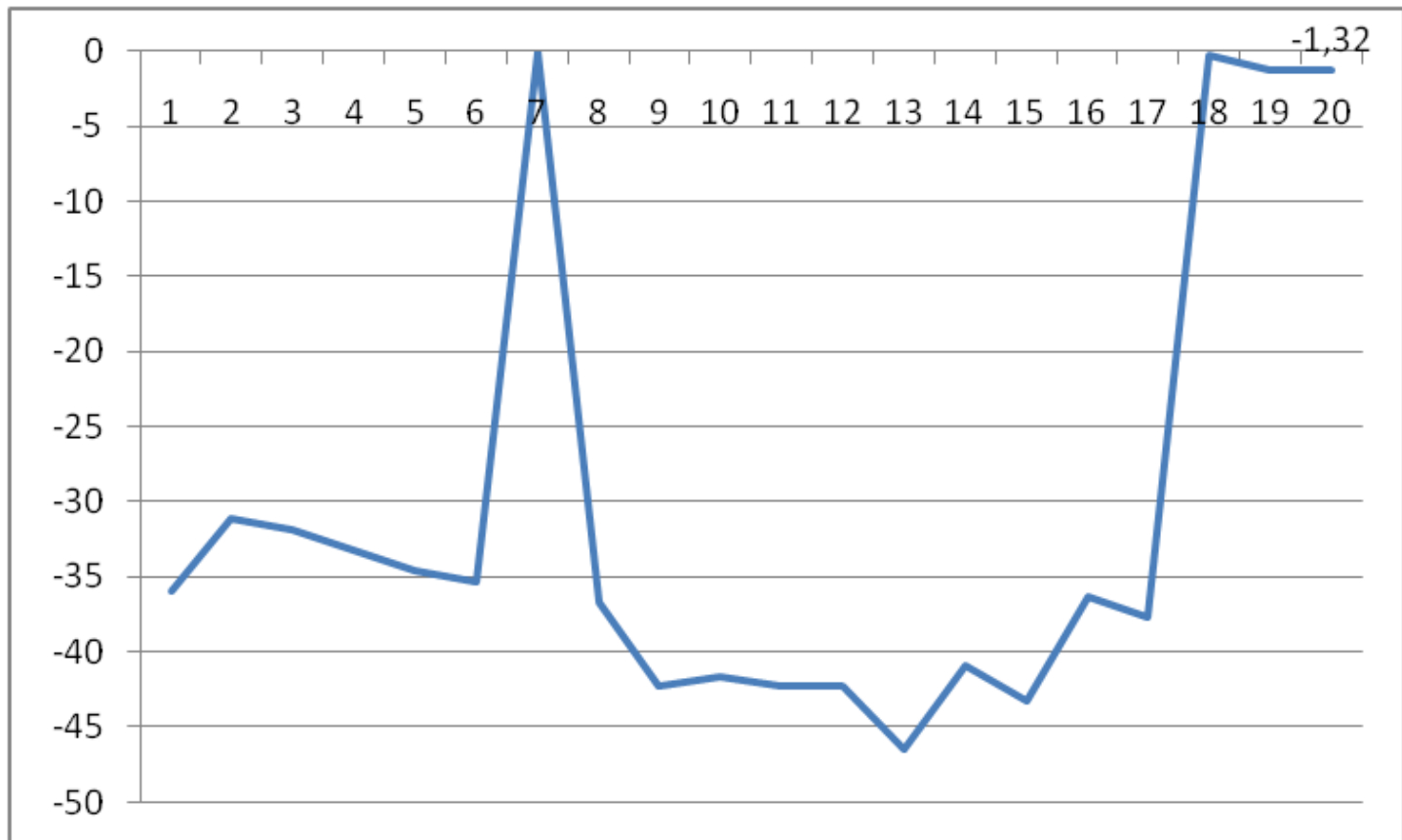


# FOB PA ACEITE DE GIRASOL (u\$s/TN)

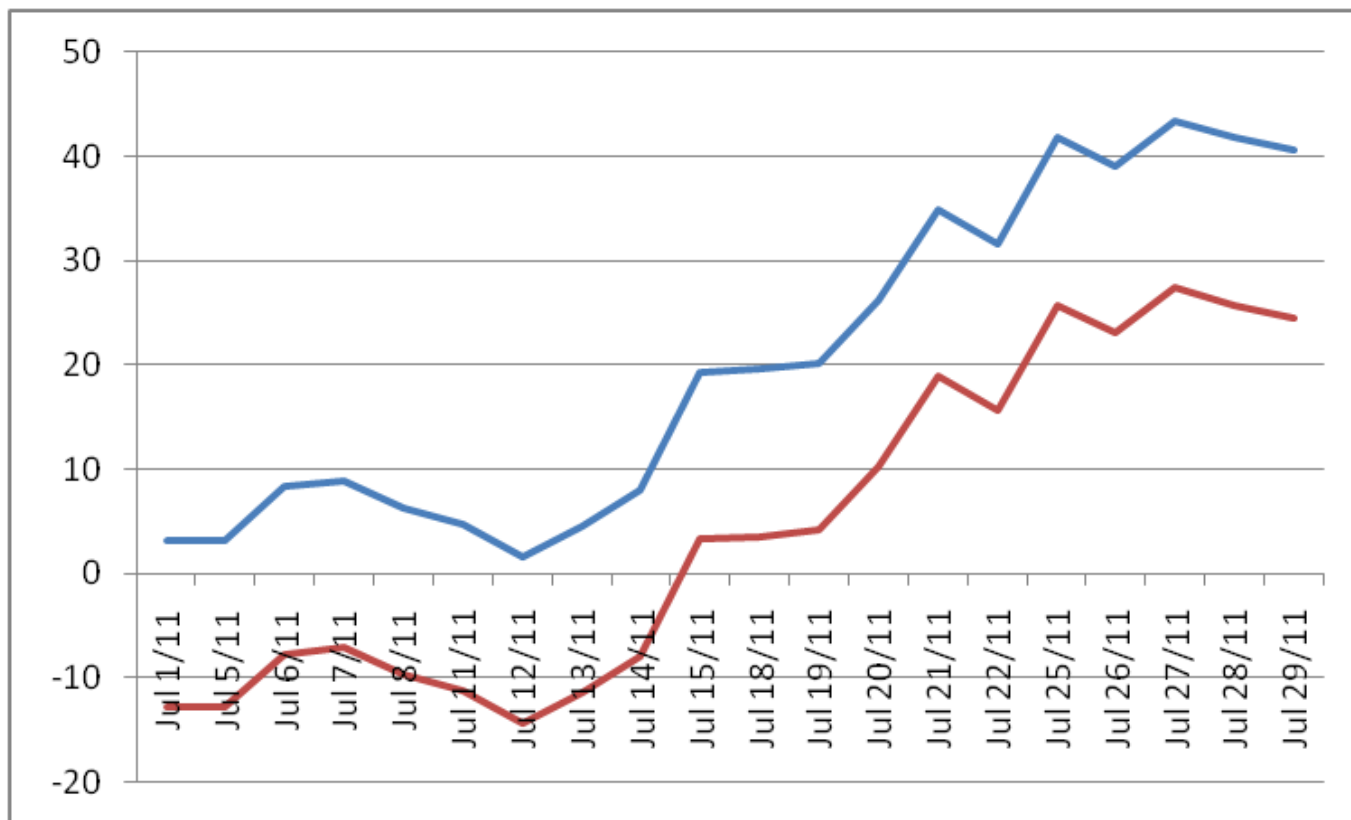




# MARGEN BRUTO DE PROCESAMIENTO GIRASOL (u\$s/TN)



# MARGEN BRUTO Y NETO DE MOLIENDA GIRASOL (u\$s/TN)



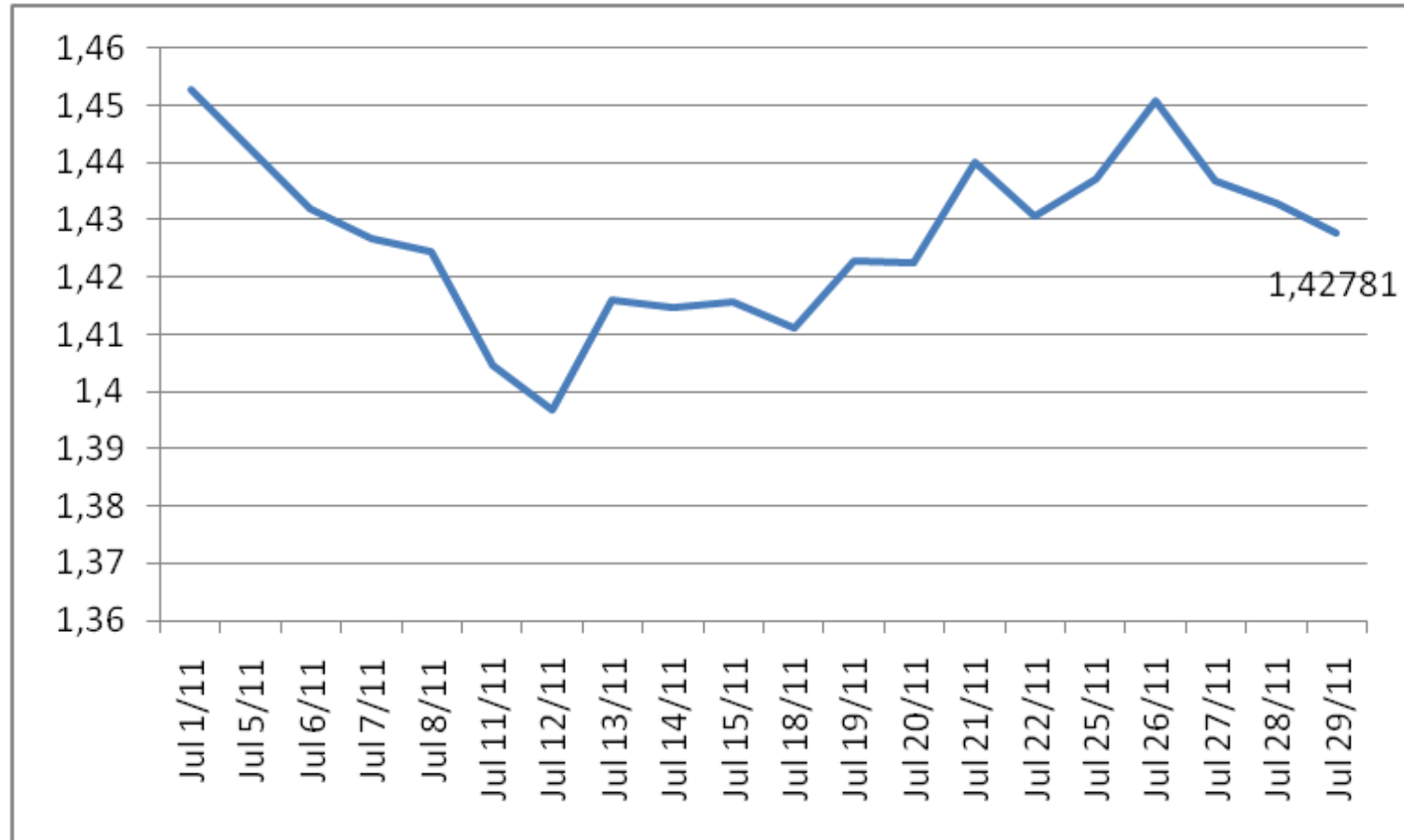
COSTO INDUSTRIALIZACION u\$s 16/TN



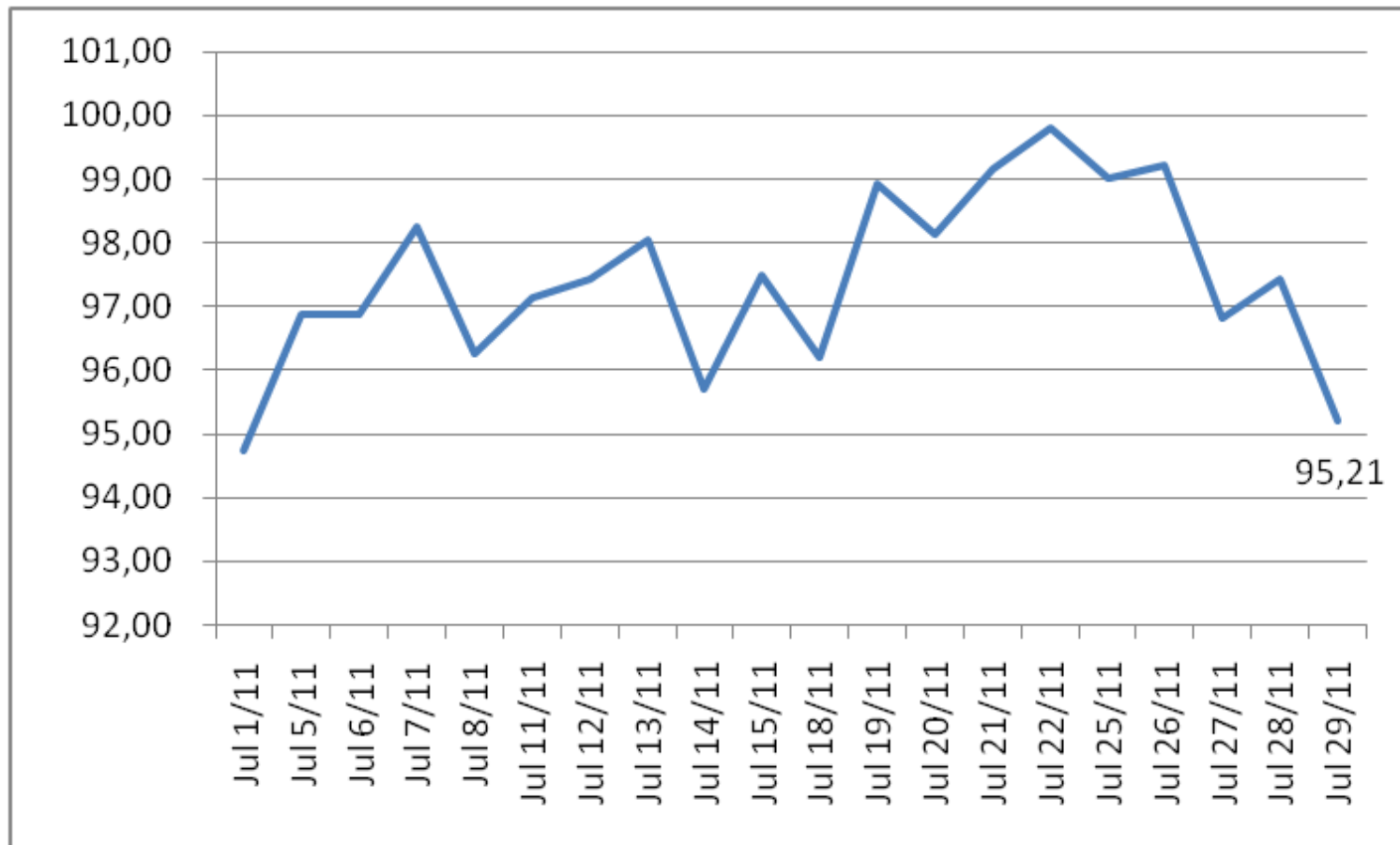
PETROLEO  
DOLAR EURO  
ORO



# RELACION DOLAR EURO



# PRECIO DEL PETROLEO (u\$s/BA)



# ORO (u\$s/ON)

